

Mainsail: 8000405 Tim-1 Wylie 38 MainsailV3.des

Design Info
=====

Design File:
\\NAS\Engineering files\Queenie-Customer Order\Fareast Sails\2024 Orders\Need to be Confirmed\8000405 Tim Wylie

Initial Design Date: 27/4/2024
Boat:
Wylie 38
Client:

Comments:
reduced slightly leech roach to be sure within backstay

Design Data
=====

Main

Measurements

Luff geodesic: 13.005m
Leech geodesic: 13.644m
Foot geodesic: 4.140m
Head geodesic: 0.135m
Upper width (MUW): 0.824m
Three-quarter width (MTW): 1.489m
Half width (MHW): 2.609m
Quarter width (MQW): 3.468m
Foot median: 13.297m
ORC Mainsail area: 31.565m?
Surface area: 32.331m?
Clew height: -0.070m
Mast rake: 0.407m

Battens

Position	Length	Roach	Angle	Luff	Leech	Full
82.000%	1.177m	0.218m	73.481?	10.661m	11.152m	Full
62.000%	2.164m	0.330m	73.481?	8.062m	8.432m	Full
42.000%	1.200m	0.297m	73.481?	5.461m	5.712m	
22.000%	1.050m	0.176m	73.481?	2.861m	2.992m	

Reefing Points

1, Luff: 1.717m ; Leech: 1.773m ; Offset: 0.000m ; Number Eyelets: 3
2, Luff: 3.576m ; Leech: 3.691m ; Offset: 0.000m ; Number Eyelets: 3
3, Luff: 6.502m ; Leech: 6.720m ; Offset: 0.000m ; Number Eyelets: 2

Draft Stripes

1, Luff: 4.291m ; Leech: 4.484m ;
2, Luff: 8.582m ; Leech: 8.920m ;

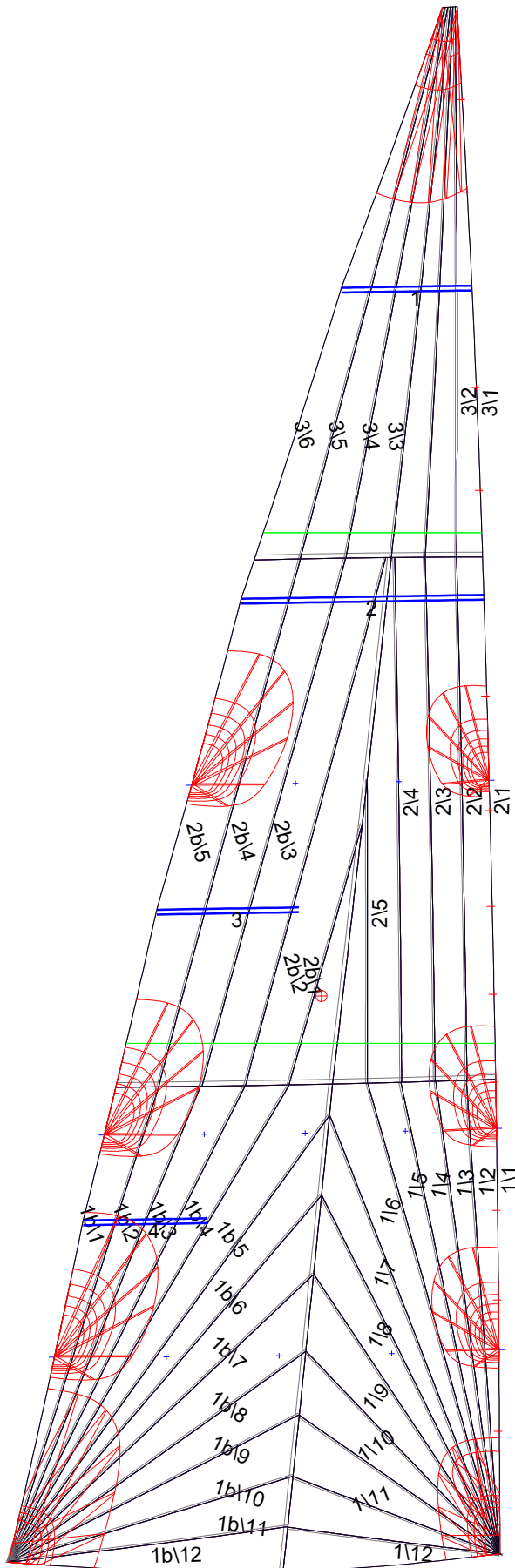
Luff Slides

1, Position: 1.030m
2, Position: 2.134m
3, Position: 2.887m
4, Position: 3.963m
5, Position: 4.702m
6, Position: 5.439m
7, Position: 6.246m
8, Position: 7.209m
9, Position: 8.938m
10, Position: 9.802m
11, Position: 11.446m
12, Position: 12.225m

Luff Curve

		Fanned Luff (@ 5.00% [0.206m])	Before BSeam
13.004m,	0.000m	100% (13.005m) :	0.000m
11.384m,	-0.043m	90% (11.705m) :	0.060m
9.753m,	-0.074m	80% (10.404m) :	0.110m
8.119m,	-0.087m	70% (9.104m) :	0.144m
6.502m,	-0.089m	60% (7.803m) :	0.162m
4.845m,	-0.082m	50% (6.503m) :	0.166m
3.251m,	-0.066m	40% (5.202m) :	0.157m
1.620m,	-0.037m	30% (3.901m) :	0.134m
0.000m,	0.000m	20% (2.601m) :	0.099m
		10% (1.300m) :	0.051m
		0% (0.000m) :	0.000m

Mainsail: 8000405 Tim-1 Wylie 38 MainsailV3.des



Seam Allowances

	Split	Radial	Cross
Zone: 1/a	0.032m	0.016m	0.040m
Zone: 1/b	0.032m	0.016m	0.040m
Zone: 2/a	0.032m	0.016m	0.040m
Zone: 2/b	0.032m	0.016m	0.040m
Zone: 3	0.032m	0.016m	0.040m

Edge Excesses

Sail:	Luff	Leech	Foot
	0.000m	0.000m	0.000m

Total Seam Lengths (m)

Horizontal	5.34
Radial/Vertical	131.16
Bi-Radial Split	8.97

Materials

Material	Area (m ²)	Panels
Material 1	32.36	1\1,1\2,1\3,1\4,1\5 1\6,1\7,1\8,1\9,1\10 1\11,1\12,1b\1,1b\2,1b\3 1b\4,1b\5,1b\6,1b\7,1b\8 1b\9,1b\10,1b\11,1b\12,2\1 2\2,2\3,2\4,2\5,2b\1 2b\2,2b\3,2b\4,2b\5,3\1 3\2,3\3,3\4,3\5,3\6