

Spinnaker: 8000324 Yves sym spin.des

Design Info
=====

Design File:
\\NAS\Engineering files\Queenie-Customer Order\Fareast Sails\2024 Orders\Need to be Confirmed\8000324 Yves spin

Initial Design Date: 22/3/2024
Boat:

Comments:

Client:

Design Data
=====

Spinnaker

Measurements

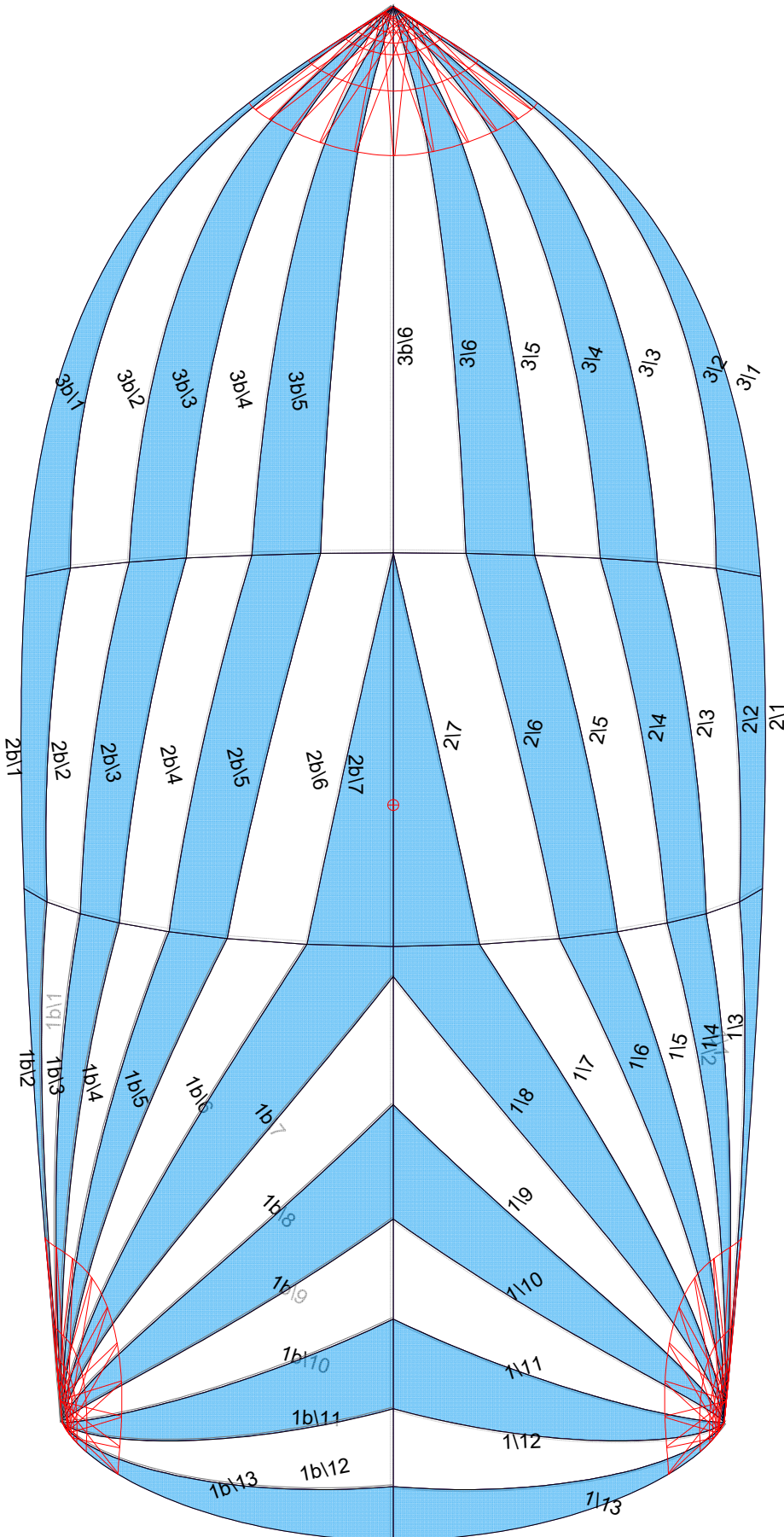
Leech length (SLE): 13.650m
Foot length (SFL): 6.876m
Headboard Width: 0.015m
Maximum width (36.9%): 7.351m
Three-quarter width: 4.900m
Half width (SHW): 7.223m
Quarter width: 7.305m
Foot median: 14.654m
ORC Spinnaker Area: 81.368m?
IRC Spinnaker Area: 81.043m?
Surface Area: 86.079m?
Hoist height: 13.650m
Pole Length: 3.820m

Luff Curve

15.500m, 0.000m
11.625m, 0.000m
7.750m, 0.000m
3.875m, 0.000m
0.000m, 0.000m

Fanned Luff (@ 5.00% [0.269m])		Before BSeam
100% (13.347m) :	-0.000m	0.000m
77% (10.235m) :	-1.885m	2.231m
56% (7.510m) :	-2.998m	2.823m
37% (4.951m) :	-3.287m	2.905m
21% (2.775m) :	-1.966m	2.735m
28% (3.720m) :	-1.471m	2.417m
28% (3.682m) :	-0.460m	2.019m
25% (3.367m) :	0.708m	1.563m
17% (2.204m) :	0.783m	1.066m
9% (1.152m) :	0.407m	0.542m
0% (0.000m) :	0.000m	0.000m

Spinnaker: 8000324 Yves sym spin.des



Seam Allowances

Zone:	Split	Radial	Cross
Zone: 1/a	0.025m	0.015m	0.025m
Zone: 1/b	0.025m	0.015m	0.025m
Zone: 2/a	0.025m	0.015m	0.025m
Zone: 2/b	0.025m	0.015m	0.025m
Zone: 3/a	0.025m	0.015m	0.025m
Zone: 3/b	0.025m	0.015m	0.025m

Edge Excesses

Sail:	Luff	Leech	Foot
Sail:	0.000m	0.000m	0.000m

Total Seam Lengths (m)

Horizontal	14.48
Radial/Vertical	215.09
Bi-Radial Split	14.79

Materials

Material	Area (m²)	Panels
lite blue	43.28	1\1, 1\3, 1\5, 1\7, 1\9 1\11, 1\13, 1b\1, 1b\3, 1b\5 1b\7, 1b\9, 1b\11, 1b\13, 2\1 2\3, 2\5, 2\7, 2b\7, 2b\5 2b\3, 2b\1, 3\1, 3\3, 3\5 3b\5, 3b\3, 3b\1
white	42.71	1\2, 1\4, 1\6, 1\8, 1\10 1\12, 1b\2, 1b\4, 1b\6, 1b\8 1b\10, 1b\12, 2\2, 2\4, 2\6 2b\6, 2b\4, 2b\2, 3\2, 3\4 3\6, 3b\6, 3b\4, 3b\2