

# Mainsail: 8000305 Mike Peterson 41 fullbattmain.des

Design Info  
=====

Design File:  
\\NAS\Engineering files\Queenie-Customer Order\Fareast Sails\2024 Orders\Need to be Confirmed\8000305 Mike Peterson

Initial Design Date: 14/3/2024  
Boat:  
Peterson 41  
Client:

Comments:

Design Data  
=====

Main

Measurements

Luff geodesic: 15.841m  
Leech geodesic: 16.850m  
Foot geodesic: 5.947m  
Head geodesic: 0.133m  
Upper width (MUW): 1.134m  
Three-quarter width (MTW): 2.090m  
Half width (MHW): 3.702m  
Quarter width (MQW): 4.976m  
Foot median: 16.272m  
ORC Mainsail area: 54.721m?  
Surface area: 56.227m?  
Clew height: 0.100m  
Mast rake: 0.000m

Battens

Position	Length	Roach	Angle	Luff	Leech	Full
82.000%	1.659m	0.325m	71.187?	12.981m	13.751m	Full
62.000%	3.065m	0.462m	71.187?	9.814m	10.397m	Full
42.000%	4.200m	0.415m	71.187?	6.647m	7.043m	Full
22.000%	5.131m	0.256m	71.187?	3.481m	3.689m	Full

Reefing Points

1, Luff: 1.932m ; Leech: 2.019m ; Offset: 0.000m ; Number Eyelets: 4  
2, Luff: 4.354m ; Leech: 4.543m ; Offset: 0.000m ; Number Eyelets: 4  
3, Luff: 7.047m ; Leech: 7.355m ; Offset: 0.000m ; Number Eyelets: 3

Draft Stripes

1, Luff: 3.959m ; Leech: 3.994m ;  
2, Luff: 7.918m ; Leech: 8.174m ;  
3, Luff: 11.877m ; Leech: 12.404m ;

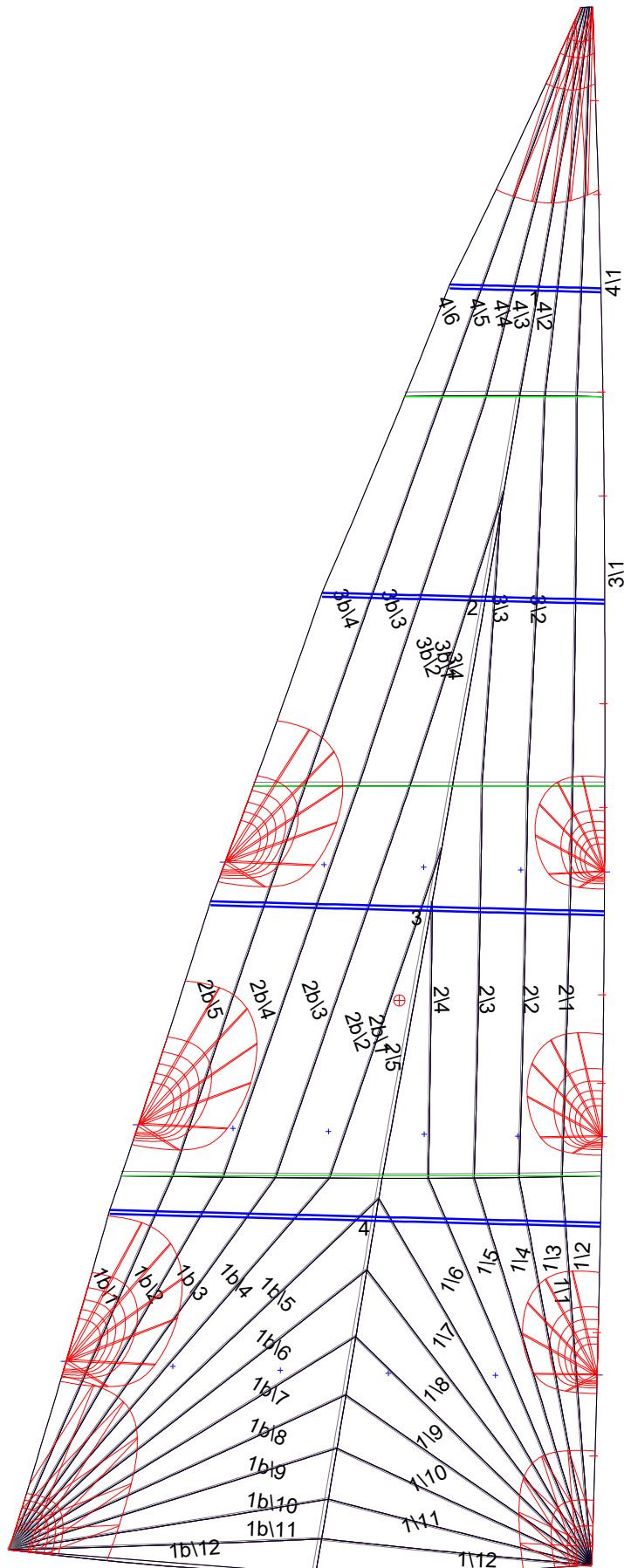
Luff Slides

1, Position: 1.109m  
2, Position: 2.363m  
3, Position: 4.897m  
4, Position: 5.799m  
5, Position: 7.702m  
6, Position: 8.758m  
7, Position: 10.870m  
8, Position: 11.925m  
9, Position: 13.935m  
10, Position: 14.888m

Luff Curve

		Fanned Luff (@ 5.00% [0.296m])	Before BSeam
15.839m,	0.000m	100% (15.841m) :	0.000m
13.866m,	-0.062m	90% (14.258m) :	0.086m
11.880m,	-0.106m	80% (12.673m) :	0.160m
9.889m,	-0.124m	70% (11.089m) :	0.209m
7.920m,	-0.127m	60% (9.505m) :	0.236m
5.902m,	-0.117m	50% (7.921m) :	0.242m
3.960m,	-0.094m	40% (6.336m) :	0.231m
1.974m,	-0.053m	30% (4.752m) :	0.198m
0.000m,	0.000m	20% (3.168m) :	0.146m
		10% (1.584m) :	0.073m
		0% (0.000m) :	0.000m

# Mainsail: 8000305 Mike Peterson 41 fullbattmain.des



## Seam Allowances

Zone:	Split	Radial	Cross
Zone: 1/a	0.038m	0.015m	0.045m
Zone: 1/b	0.038m	0.015m	0.045m
Zone: 2/a	0.038m	0.015m	0.045m
Zone: 2/b	0.038m	0.015m	0.045m
Zone: 3/a	0.038m	0.015m	0.045m
Zone: 3/b	0.038m	0.015m	0.045m
Zone: 4	0.038m	0.015m	0.045m

## Edge Excesses

Sail:	Luff	Leech	Foot
Sail:	0.000m	0.000m	0.000m

## Total Seam Lengths (m)

Horizontal	10.97
Radial/Vertical	160.15
Bi-Radial Split	12.69

## Materials

Material	Area (m <sup>2</sup> )	Panels
Material 1	58.57	1\1,1\2,1\3,1\4,1\5 1\6,1\7,1\8,1\9,1\10 1\11,1\12,1b\1,1b\2,1b\3 1b\4,1b\5,1b\6,1b\7,1b\8 1b\9,1b\10,1b\11,1b\12,2\1 2\2,2\3,2\4,2\5,2b\1 2b\2,2b\3,2b\4,2b\5,3\1 3\2,3\3,3\4,3b\1,3b\2 3b\3,3b\4,4\1,4\2,4\3 4\4,4\5,4\6