

Mainsail: 8000241 Mehul Sun Odyssey 35.5 Fullbattman.des

Design Info

=====

Initial Design Date: 14/3/2024
Boat:
Sun Odyssey 35.5
Client:

Design File:

\\NAS\Engineering files\Queenie-Customer Order\Fareast Sails\2024 Orders\Need to be Confirmed\8000241 Mehul Sun

Comments:

Design Data

=====

Main

Measurements

Luff geodesic:	11.583m
Leech geodesic:	12.136m
Foot geodesic:	3.811m
Head geodesic:	0.115m
Upper width (MUW):	0.758m
Three-quarter width (MTW):	1.369m
Half width (MHW):	2.388m
Quarter width (MQW):	3.181m
Foot median:	11.829m
ORC Mainsail area:	25.797m ²
Surface area:	26.450m ²
Clew height:	0.100m
Mast rake:	0.000m

Battens

Position	Length	Roach	Angle	Luff	Leech	Full
82.000%	1.096m	0.235m	73.706?	9.493m	9.917m	Full
62.000%	1.982m	0.325m	73.706?	7.177m	7.499m	Full
42.000%	2.702m	0.293m	73.706?	4.861m	5.080m	Full
22.000%	3.276m	0.169m	73.706?	2.546m	2.661m	Full

Draft Stripes

1, Luff: 3.821m ; Leech: 3.859m ;
2, Luff: 7.643m ; Leech: 7.850m ;

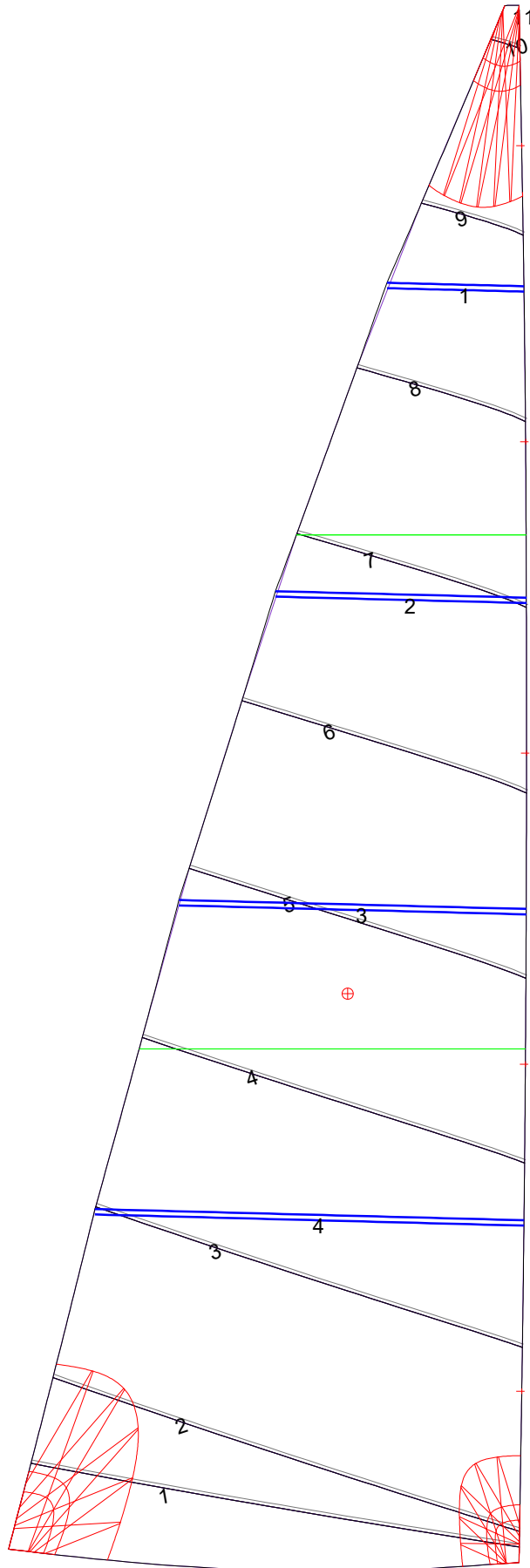
Luff Slides

1, Position: 1.274m
2, Position: 3.706m
3, Position: 6.021m
4, Position: 8.336m
5, Position: 10.538m

Luff Curve

		Fanned Luff (@ 5.00% [0.190m])	Before BSeam
11.583m,	0.000m	100% (11.583m) :	0.000m
10.139m,	-0.027m	90% (10.425m) :	0.046m
8.687m,	-0.046m	80% (9.266m) :	0.084m
7.231m,	-0.055m	70% (8.108m) :	0.110m
5.791m,	-0.056m	60% (6.950m) :	0.125m
4.316m,	-0.051m	50% (5.792m) :	0.128m
2.896m,	-0.041m	40% (4.633m) :	0.121m
1.443m,	-0.023m	30% (3.475m) :	0.104m
0.000m,	0.000m	20% (2.317m) :	0.076m
		10% (1.158m) :	0.038m
		0% (0.000m) :	0.000m

Mainsail: 8000241 Mehul Sun Odyssey 35.5 Fullbattman.des



Seam Allowances

Zone: 1	Split	Radial	Cross
	0.025m	0.025m	0.025m

Edge Excesses

Sail:	Luff	Leech	Foot
	0.000m	0.000m	0.000m

Total Seam Lengths (m)

Horizontal	23.36
Radial/Vertical	0.00
Bi-Radial Split	0.00

Materials

Material	Area (m ²)	Panels
Material 1	26.46	1,2,3,4,5 6,7,8,9,10 11