

# Genoa: 8000237 Eduard-2 Farr30 105% jib.des

Design Info  
=====

Design File:  
\\NAS\Engineering files\Queenie-Customer Order\Fareast Sails\2024 Orders\Need to be Confirmed\8000237 Eduard m

Initial Design Date: 6/3/2024  
Boat:

Comments:

Client:

Design Data  
=====

## Genoa

### Measurements

Luff geodesic: 11.520m  
 Leech geodesic: 10.846m  
 Foot geodesic: 3.687m  
 Headboard width: 0.033m  
 Luff perpendicular (HLP): 3.486m  
 Upper width (HUW): 0.544m  
 Three-quarter width (HTW): 1.026m  
 Half width (HHW): 1.859m  
 Quarter width (HQW): 2.674m  
 Foot median: 11.271m  
 ORC Headsail area: 20.998m?  
 IRC Headsail area: 21.070m?  
 Surface area: 21.668m?  
 Forestay height: 11.670m  
 J: 3.320m

### Battens

Position	Length	Roach	Angle	Luff	Leech	Full
80.000%	0.891m	0.134m	87.778?	9.264m	8.652m	Full
60.000%	1.050m	0.119m	87.778?	7.016m	6.489m	
40.000%	1.050m	0.055m	87.778?	4.768m	4.326m	
20.000%	0.950m	0.022m	87.778?	2.520m	2.163m	

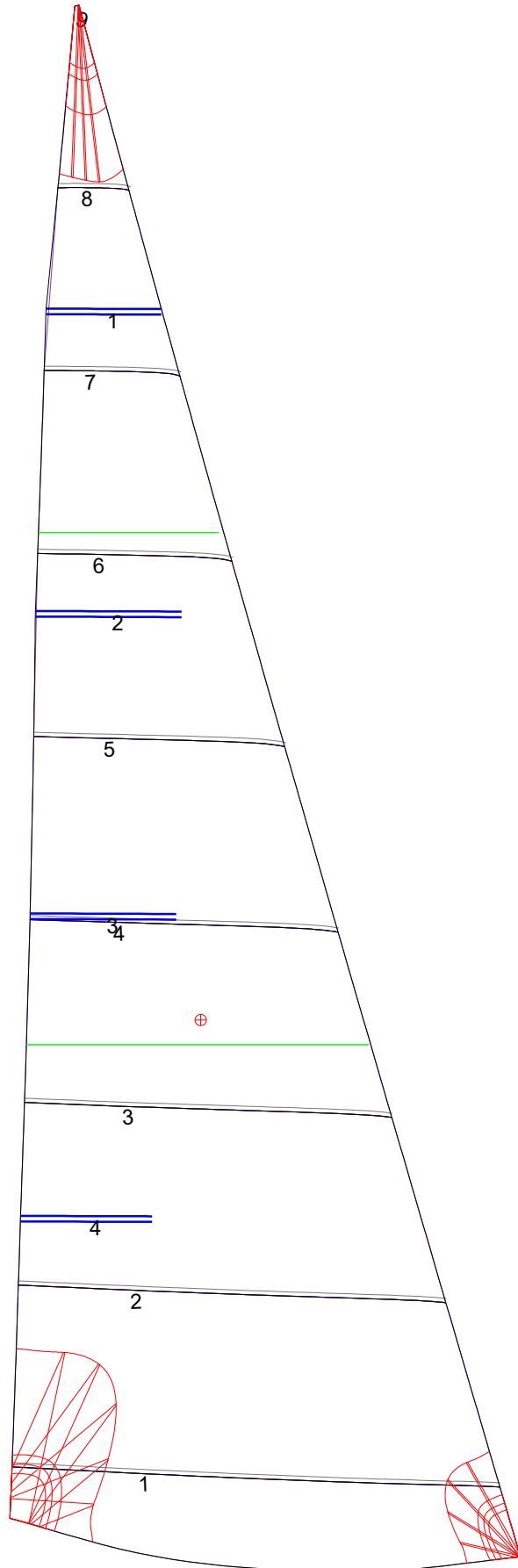
### Draft Stripes

1, Luff: 3.813m ; Leech: 3.393m ;  
 2, Luff: 7.622m ; Leech: 7.047m ;

### Luff Curve

		Fanned Luff (@ 5.00% [0.182m])	Before BSeam
11.519m,	0.000m	100% (11.519m) :	0.000m
10.562m,	0.029m	90% (10.367m) :	-0.031m
9.503m,	0.052m	80% (9.216m) :	-0.053m
8.571m,	0.065m	70% (8.064m) :	-0.065m
7.487m,	0.069m	60% (6.912m) :	-0.068m
5.732m,	0.061m	50% (5.760m) :	-0.063m
3.744m,	0.041m	40% (4.608m) :	-0.054m
1.947m,	0.021m	30% (3.456m) :	-0.042m
0.000m,	0.000m	20% (2.304m) :	-0.029m
		10% (1.151m) :	-0.015m
		0% (0.000m) :	-0.000m

# Genoa: 8000237 Eduard-2 Farr30 105% jib.des



Seam Allowances			
Zone: 1	Split	Radial	Cross
	0.030m	0.030m	0.030m

Edge Excesses			
Sail:	Luff	Leech	Foot
	0.000m	0.000m	0.000m

## Total Seam Lengths (m)

Horizontal	16.65
Radial/Vertical	0.00
Bi-Radial Split	0.00

## Materials

Material	Area (m <sup>2</sup> )	Panels
Material 1	21.64	1,2,3,4,5 6,7,8,9