

Mainsail: 8000237 Eduard-1 Farr30 MainsailV1.des

Design Info
=====

Design File:
\\NAS\Engineering files\Queenie-Customer Order\Fareast Sails\2024 Orders\Need to be Confirmed\8000237 Eduard m

Initial Design Date: 6/3/2024
Boat:
Farr 30
Client:

Comments:

Design Data
=====

Main

Measurements

Luff geodesic: 12.230m
Leech geodesic: 12.679m
Foot geodesic: 4.340m
Head geodesic: 0.170m
Upper width (MUW): 1.062m
Three-quarter width (MTW): 1.936m
Half width (MHW): 3.162m
Quarter width (MQW): 3.947m
Foot median: 12.429m
ORC Mainsail area: 34.559m?
Surface area: 35.831m?
Clew height: 0.307m
Mast rake: 0.000m

Battens

Position	Length	Roach	Angle	Luff	Leech	Full
80.835%	1.728m	0.542m	74.839?	9.859m	10.194m	Full
62.000%	2.760m	0.666m	74.839?	7.554m	7.819m	Full
42.000%	1.570m	0.590m	74.839?	5.113m	5.296m	
22.000%	1.570m	0.352m	74.839?	2.676m	2.774m	

Reefing Points

1, Luff: 1.768m ; Leech: 1.796m ; Offset: 0.000m ; Number Eyelets: 3
2, Luff: 3.659m ; Leech: 3.718m ; Offset: 0.000m ; Number Eyelets: 3

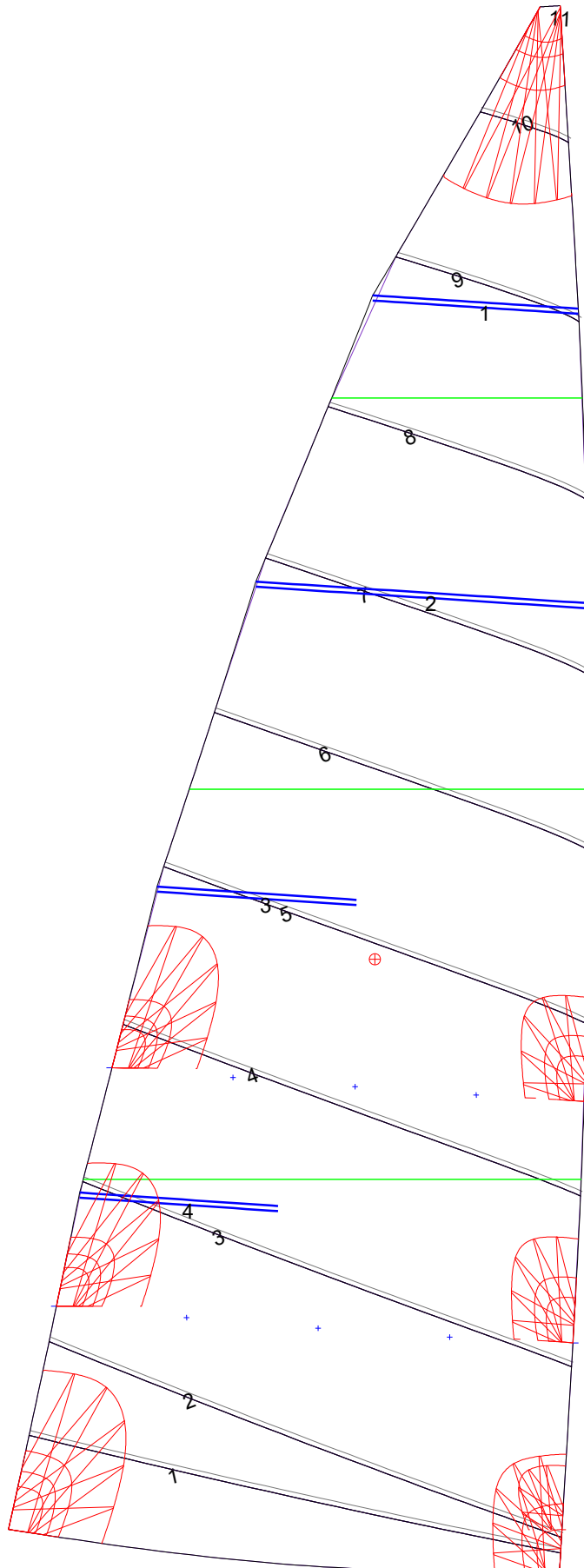
Draft Stripes

1, Luff: 3.049m ; Leech: 2.814m ;
2, Luff: 6.100m ; Leech: 5.981m ;
3, Luff: 9.157m ; Leech: 9.216m ;

Luff Curve

		Fanned Luff (@ 5.00% [0.216m])	Before BSeam
12.224m,	0.000m	100% (12.230m) :	0.000m
9.168m,	-0.175m	90% (11.009m) :	0.106m
6.112m,	-0.225m	80% (9.784m) :	0.204m
3.056m,	-0.168m	70% (8.562m) :	0.271m
0.000m,	0.000m	60% (7.338m) :	0.306m
		50% (6.115m) :	0.314m
		40% (4.891m) :	0.301m
		30% (3.668m) :	0.262m
		20% (2.445m) :	0.193m
		10% (1.224m) :	0.097m
		0% (0.000m) :	0.000m

Mainsail: 8000237 Eduard-1 Farr30 MainsailV1.des



Seam Allowances			
Zone:	Split	Radial	Cross
1	0.038m	0.038m	0.038m

Edge Excesses			
Sail:	Luff	Leech	Foot
	0.000m	0.000m	0.000m

Total Seam Lengths (m)

Horizontal	31.18
Radial/Vertical	0.00
Bi-Radial Split	0.00

Materials

Material	Area (m ²)	Panels
Material 1	35.81	1,2,3,4,5 6,7,8,9,10 11