

# Mainsail: 8000218 Jason-1 Wildcat 350 Catamaran MainV3.des

Design Info  
=====

Initial Design Date: 11/4/2024  
Boat:  
Wildcat 350 Catamaran  
Client:

Design File:  
\\NAS\Engineering files\Queenie-Customer Order\Fareast Sails\2024 Orders\Need to be Confirmed\8000218 Jason V3

Comments:  
Tack angle 80.97degree,  
leech is reduced 10cm to 13.12m.

Design Data  
=====

Main

Measurements

Luff geodesic: 12.870m  
Leech geodesic: 13.120m  
Foot geodesic: 4.800m  
Head geodesic: 0.850m  
Upper width (MUW): 1.675m  
Three-quarter width (MTW): 2.806m  
Half width (MHW): 4.068m  
Quarter width (MQW): 4.600m  
Foot median: 12.949m  
ORC Mainsail area: 45.757m?  
Surface area: 48.487m?  
Clew height: 0.770m  
Mast rake: 0.000m

Battens

Position	Length	Roach	Angle	Luff	Leech	Full
100.000%	1.109m	0.000m	110.368?	12.175m	12.988m	Full
88.586%	2.281m	0.865m	85.052?	11.171m	11.506m	Full
73.494%	3.353m	1.268m	81.352?	9.338m	9.546m	Full
58.192%	3.984m	1.263m	81.352?	7.392m	7.558m	Full
40.535%	4.429m	1.024m	81.352?	5.149m	5.265m	Full
22.037%	4.691m	0.620m	81.352?	2.802m	2.862m	Full

Reefing Points

1, Luff: 2.182m ; Leech: 2.186m ; Offset: 0.000m ; Number Eyelets: 3  
2, Luff: 4.494m ; Leech: 4.486m ; Offset: 0.000m ; Number Eyelets: 3  
3, Luff: 6.874m ; Leech: 6.838m ; Offset: 0.000m ; Number Eyelets: 2

Draft Stripes

1, Luff: 3.209m ; Leech: 2.472m ;  
2, Luff: 6.424m ; Leech: 5.740m ;  
3, Luff: 9.643m ; Leech: 9.056m ;

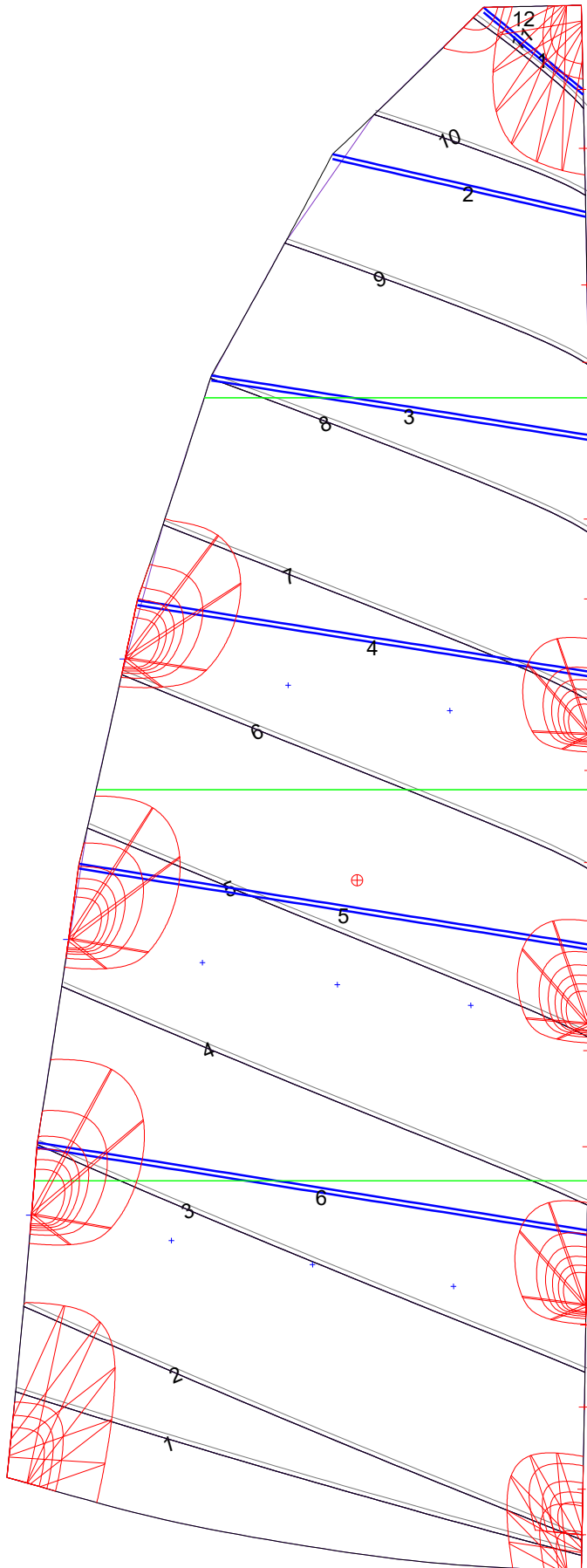
Luff Slides

1, Position: 0.674m  
2, Position: 1.349m  
3, Position: 2.024m  
4, Position: 3.488m  
5, Position: 4.279m  
6, Position: 5.824m  
7, Position: 6.580m  
8, Position: 7.990m  
9, Position: 8.646m  
10, Position: 9.936m  
11, Position: 10.571m  
12, Position: 11.693m  
13, Position: 12.179m

Luff Curve

		Fanned Luff (@ 5.00% [0.236m])	Before BSeam
12.869m,	0.000m	100% (12.870m) :	0.000m
11.266m,	-0.034m	90% (11.584m) :	0.017m
9.652m,	-0.059m	80% (10.296m) :	0.130m
8.034m,	-0.070m	70% (9.009m) :	0.166m
6.435m,	-0.071m	60% (7.722m) :	0.177m
4.795m,	-0.066m	50% (6.435m) :	0.171m
3.217m,	-0.052m	40% (5.148m) :	0.155m
1.604m,	-0.030m	30% (3.861m) :	0.128m
0.000m,	0.000m	20% (2.573m) :	0.091m
		10% (1.288m) :	0.012m
		0% (0.000m) :	0.000m

# Mainsail: 8000218 Jason-1 Wildcat 350 Catamaran MainV3.des



Seam Allowances			
Zone: 1	Split	Radial	Cross
	0.038m	0.038m	0.038m

Edge Excesses			
Sail:	Luff	Leech	Foot
	0.000m	0.000m	0.000m

Total Seam Lengths (m)

Horizontal	42.25
Radial/Vertical	0.00
Bi-Radial Split	0.00

Materials

Material	Area (m <sup>2</sup> )	Panels
Material 1	48.38	1,2,3,4,5 6,7,8,9,10 11,12