

Mainsail: 8000211 Kjetil-1 Sundwind 27 fullbatt main.des

Design Info
=====

Design File:
\\NAS\Engineering files\Queenie-Customer Order\Fareast Sails\2024 Orders\Need to be Confirmed\8000211 Kjetil Sur

Initial Design Date: 19/2/2024
Boat:

Comments:
tack angle 88.5 degree

Client:

Design Data
=====

Main

Measurements

Luff geodesic: 9.360m
 Leech geodesic: 9.862m
 Foot geodesic: 3.250m
 Head geodesic: 0.115m
 Upper width (MUW): 0.656m
 Three-quarter width (MTW): 1.185m
 Half width (MHW): 2.052m
 Quarter width (MQW): 2.727m
 Foot median: 9.578m
 ORC Mainsail area: 17.897m?
 Surface area: 18.394m?
 Clew height: -0.264m
 Mast rake: 0.000m

Battens

Position	Length	Roach	Angle	Luff	Leech	Full
80.000%	1.040m	0.223m	72.951?	7.482m	7.859m	Full
60.000%	1.779m	0.290m	72.951?	5.610m	5.894m	Full
40.000%	2.377m	0.256m	72.951?	3.738m	3.929m	Full
20.000%	2.856m	0.148m	72.951?	1.867m	1.965m	Full

Reefing Points

1, Luff: 1.142m ; Leech: 1.178m ; Offset: 0.000m ; Number Eyelets: 2
 2, Luff: 2.480m ; Leech: 2.559m ; Offset: 0.000m ; Number Eyelets: 2

Draft Stripes

1, Luff: 3.088m ; Leech: 3.121m ;
 2, Luff: 6.176m ; Leech: 6.362m ;

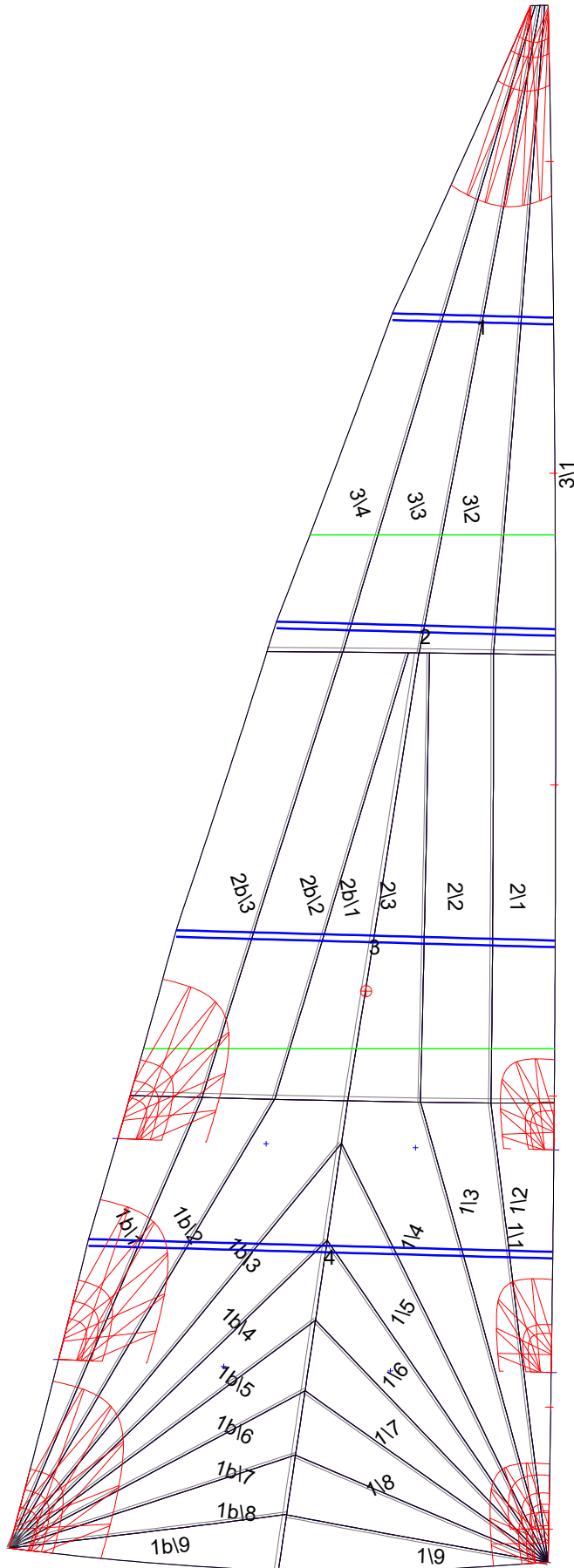
Luff Slides

1, Position: 0.933m
 2, Position: 2.802m
 3, Position: 4.674m
 4, Position: 6.546m
 5, Position: 8.421m

Luff Curve

		Fanned Luff (@ 5.00% [0.162m])	Before BSeam
9.360m,	0.000m	100% (9.360m) :	0.000m
8.193m,	-0.022m	90% (8.424m) :	0.013m
7.020m,	-0.037m	80% (7.488m) :	0.070m
5.843m,	-0.044m	70% (6.552m) :	0.092m
4.680m,	-0.044m	60% (5.616m) :	0.104m
3.488m,	-0.041m	50% (4.680m) :	0.106m
2.340m,	-0.033m	40% (3.744m) :	0.100m
1.166m,	-0.019m	30% (2.808m) :	0.085m
0.000m,	0.000m	20% (1.872m) :	0.063m
		10% (0.936m) :	0.031m
		0% (0.000m) :	0.000m

Mainsail: 8000211 Kjetil-1 Sundwind 27 fullbatt main.des



Seam Allowances

Zone:	Split	Radial	Cross
Zone: 1/a	0.025m	0.015m	0.025m
Zone: 1/b	0.025m	0.015m	0.025m
Zone: 2/a	0.025m	0.015m	0.025m
Zone: 2/b	0.025m	0.015m	0.025m
Zone: 3	0.025m	0.015m	0.025m

Edge Excesses

Sail:	Luff	Leech	Foot
	0.000m	0.000m	0.000m

Total Seam Lengths (m)

Horizontal	4.47
Radial/Vertical	61.01
Bi-Radial Split	5.76

Materials

Material	Area (m ²)	Panels
Material 1	18.42	1i1, 1i2, 1i3, 1i4, 1i5 1i6, 1i7, 1i8, 1i9, 1b1 1b2, 1b3, 1b4, 1b5, 1b6 1b7, 1b8, 1b9, 2i1, 2i2 2i3, 2b1, 2b2, 2b3, 3i1 3i2, 3i3, 3i4