

Genoa: 7001216 Guillermo-2 Beneteau 45F Headsail.des

Design Info
=====

Design File:
\\NAS\Engineering files\Queenie-Customer Order\Fareast Sails\2023 Order\Need to be Confirmed\7001216 Guillermo

Initial Design Date: 21/12/2023
Boat:

Comments:

Client:

Design Data
=====

Genoa

Measurements

Luff geodesic:	15.968m
Leech geodesic:	14.950m
Foot geodesic:	6.327m
Headboard width:	0.055m
Luff perpendicular (HLP):	5.941m
Upper width (HUW):	0.662m
Three-quarter width (HTW):	1.304m
Half width (HHW):	2.725m
Quarter width (HQW):	4.291m
Foot median:	15.320m
ORC Headsail area:	45.381m?
IRC Headsail area:	45.258m?
Surface area:	45.606m?
Forestay height:	16.200m
J:	4.570m

Draft Stripes

- 1, Luff: 4.008m ; Leech: 3.316m ;
- 2, Luff: 8.015m ; Leech: 7.203m ;
- 3, Luff: 12.008m ; Leech: 11.050m ;

Luff Curve

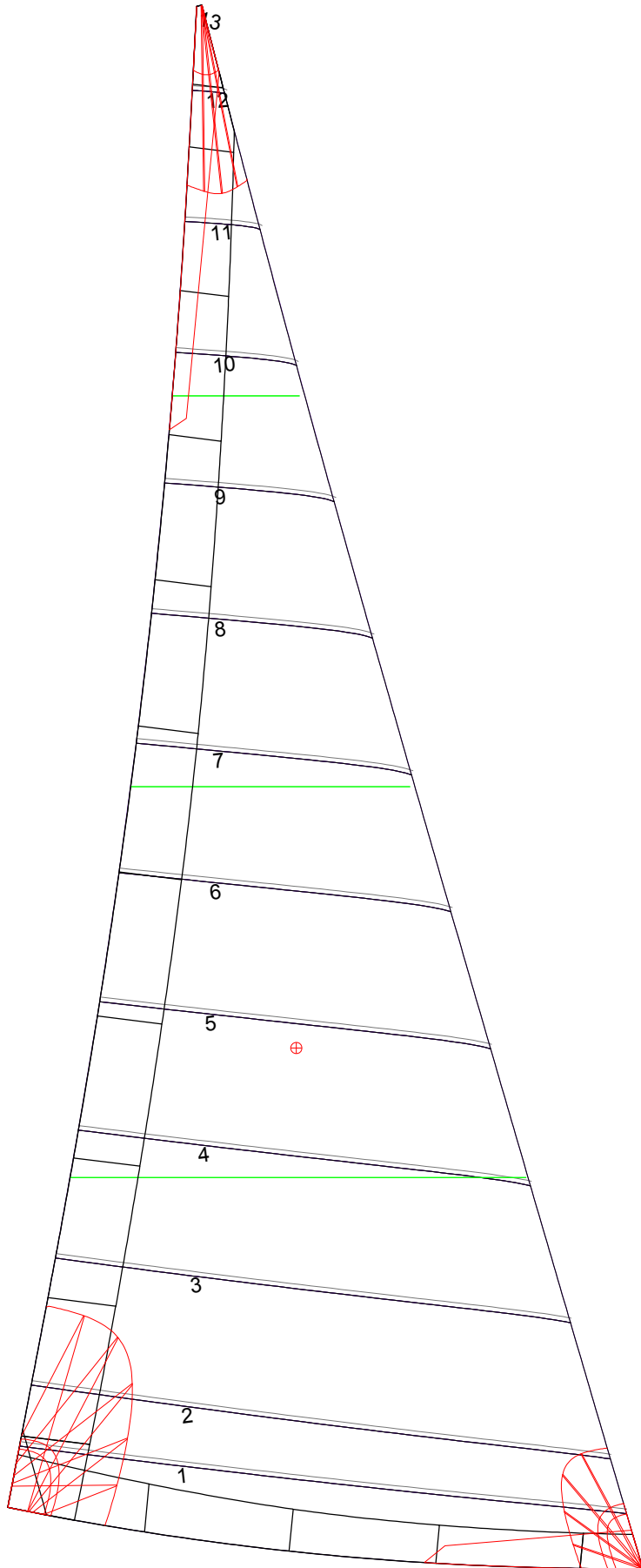
15.965m,	0.000m
14.638m,	0.054m
13.171m,	0.098m
11.879m,	0.120m
10.378m,	0.129m
7.945m,	0.113m
5.189m,	0.077m
2.699m,	0.038m
0.000m,	0.000m

Fanned Luff (@ 5.00% [0.312m])

100% (15.965m) :	-0.000m	-0.000m
90% (14.368m) :	-0.058m	-0.017m
80% (12.774m) :	-0.100m	-0.024m
70% (11.176m) :	-0.122m	-0.018m
60% (9.580m) :	-0.126m	-0.005m
50% (7.983m) :	-0.116m	0.010m
40% (6.387m) :	-0.098m	0.022m
30% (4.790m) :	-0.077m	0.027m
20% (3.194m) :	-0.052m	0.026m
10% (1.595m) :	-0.028m	0.018m
0% (0.000m) :	0.000m	0.000m

Before BSeam

Genoa: 7001216 Guillermo-2 Beneteau 45F Headsail.des



Seam Allowances

Zone:	Split	Radial	Cross
Zone: 1	0.045m	0.045m	0.045m
Cover 1	0.025m	0.025m	0.025m
Cover 2	0.025m	0.025m	0.025m
Cover 3	0.000m	0.000m	0.000m
Cover 4	0.000m	0.000m	0.000m

Edge Excesses

Sail:	Luff	Leech	Foot
Sail:	0.000m	0.000m	0.000m
Cover 0	0.070m	0.100m	0.070m
Cover 1	0.070m	0.070m	0.100m
Cover 2	0.000m	0.070m	0.070m
Cover 3	0.000m	0.070m	0.070m

Total Seam Lengths (m)

Horizontal	38.56
Radial/Vertical	0.00
Bi-Radial Split	0.00

Materials

Material	Area (m ²)	Panels
Material 1	45.73	1,2,3,4,5 6,7,8,9,10 11,12,13