

Genoa: 7001132 Mark-2 Lagoon 440 HeadsailV3.des

Design Info

=====

Design File:

\\NAS\Engineering files\Queenie-Customer Order\Fareast Sails\2024 Orders\Need to be Confirmed\7001132 Mark Lag

Initial Design Date: 5/4/2024

Boat:

Lagoon 440

Client:

Comments:

Design Data

=====

Genoa

Measurements

Luff geodesic:	16.565m
Leech geodesic:	14.345m
Foot geodesic:	5.376m
Headboard width:	0.055m
Luff perpendicular (HLP):	4.524m
Upper width (HUW):	0.505m
Three-quarter width (HTW):	0.981m
Half width (HHW):	2.047m
Quarter width (HQW):	3.245m
Foot median:	15.418m
ORC Headsail area:	35.643m?
IRC Headsail area:	35.541m?
Surface area:	36.165m?
Forestay height:	17.170m
J:	3.480m

Draft Stripes

1, Luff: 4.156m ; Leech: 2.244m ;
2, Luff: 8.311m ; Leech: 6.282m ;
3, Luff: 12.453m ; Leech: 10.290m ;

Luff Curve

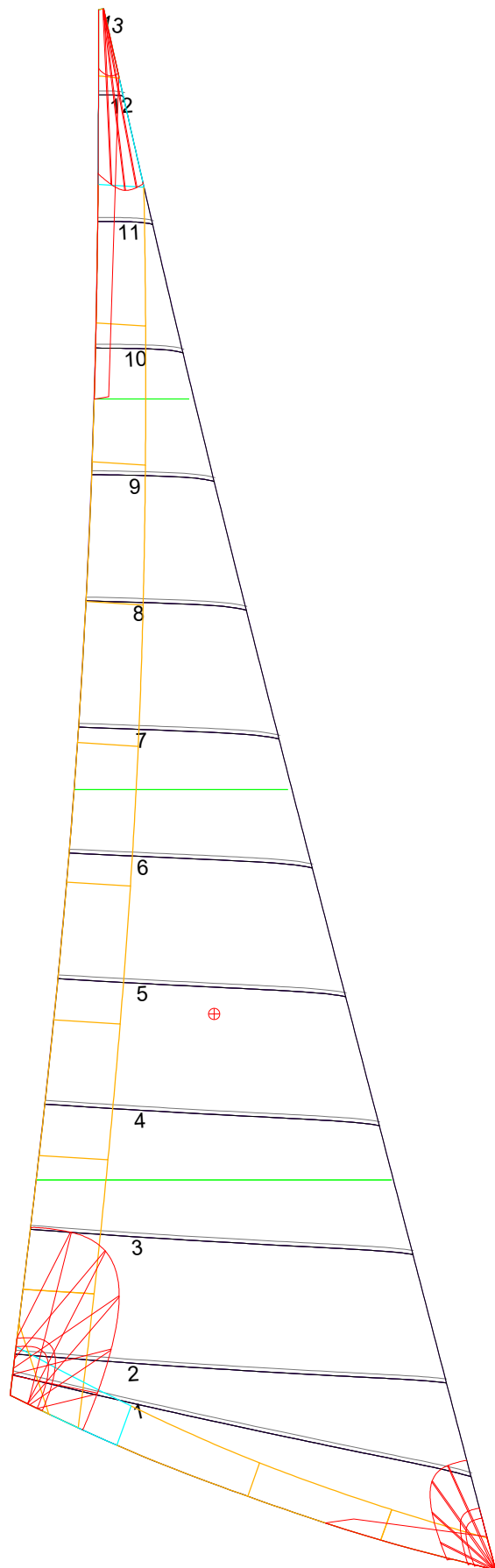
16.561m,	0.000m
15.185m,	0.056m
13.663m,	0.102m
12.323m,	0.125m
10.765m,	0.134m
8.242m,	0.117m
5.382m,	0.080m
2.799m,	0.040m
0.000m,	0.000m

Fanned Luff (@ 5.00% [0.250m])

100% (16.562m) :	0.000m	-0.000m
90% (14.908m) :	-0.068m	-0.021m
80% (13.250m) :	-0.116m	-0.031m
70% (11.595m) :	-0.139m	-0.026m
60% (9.938m) :	-0.141m	-0.013m
50% (8.282m) :	-0.128m	0.003m
40% (6.625m) :	-0.106m	0.017m
30% (4.969m) :	-0.080m	0.024m
20% (3.313m) :	-0.053m	0.024m
10% (1.656m) :	-0.027m	0.017m
0% (0.000m) :	0.000m	0.000m

Before BSeam

Genoa: 7001132 Mark-2 Lagoon 440 HeadsailV3.des



Seam Allowances

Zone:	Split	Radial	Cross
Zone: 1	0.040m	0.040m	0.040m
Cover 1	0.025m	0.025m	0.025m
Cover 2	0.025m	0.025m	0.025m
Cover 3	0.000m	0.000m	0.000m
Cover 4	0.000m	0.000m	0.000m

Edge Excesses

Sail:	Luff	Leech	Foot
Sail:	0.000m	0.000m	0.000m
Cover 0	0.070m	0.100m	0.070m
Cover 1	0.070m	0.070m	0.100m
Cover 2	0.000m	0.070m	0.070m
Cover 3	0.000m	0.070m	0.070m

Total Seam Lengths (m)

Horizontal	30.28
Radial/Vertical	0.00
Bi-Radial Split	0.00

Materials

Material	Area (m ²)	Panels
Material 1	36.11	1,2,3,4,5 6,7,8,9,10 11,12,13