

Genoa: 7001119 Mike-1 Heavy JibV1.des

Design Info
=====

Design File:
\\NAS\Engineering files\Queenie-Customer Order\Fareast Sails\2023 Order\Need to be Confirmed\7001119 Mike\7001

Initial Design Date: 25/11/2023
Boat:

Comments:

Client:

Design Data
=====

Genoa

Measurements

Luff geodesic:	10.000m
Leech geodesic:	8.328m
Foot geodesic:	3.267m
Headboard width:	0.045m
Luff perpendicular (HLP):	2.542m
Upper width (HUW):	0.283m
Three-quarter width (HTW):	0.538m
Half width (HHW):	1.123m
Quarter width (HQW):	1.800m
Foot median:	9.134m
ORC Headsail area:	11.962m?
IRC Headsail area:	11.928m?
Surface area:	12.143m?
Forestay height:	11.260m
J:	3.100m

Luff Curve

9.998m,	0.000m
9.168m,	0.028m
8.249m,	0.050m
7.440m,	0.062m
6.499m,	0.066m
4.976m,	0.058m
3.249m,	0.040m
1.690m,	0.020m
0.000m,	0.000m

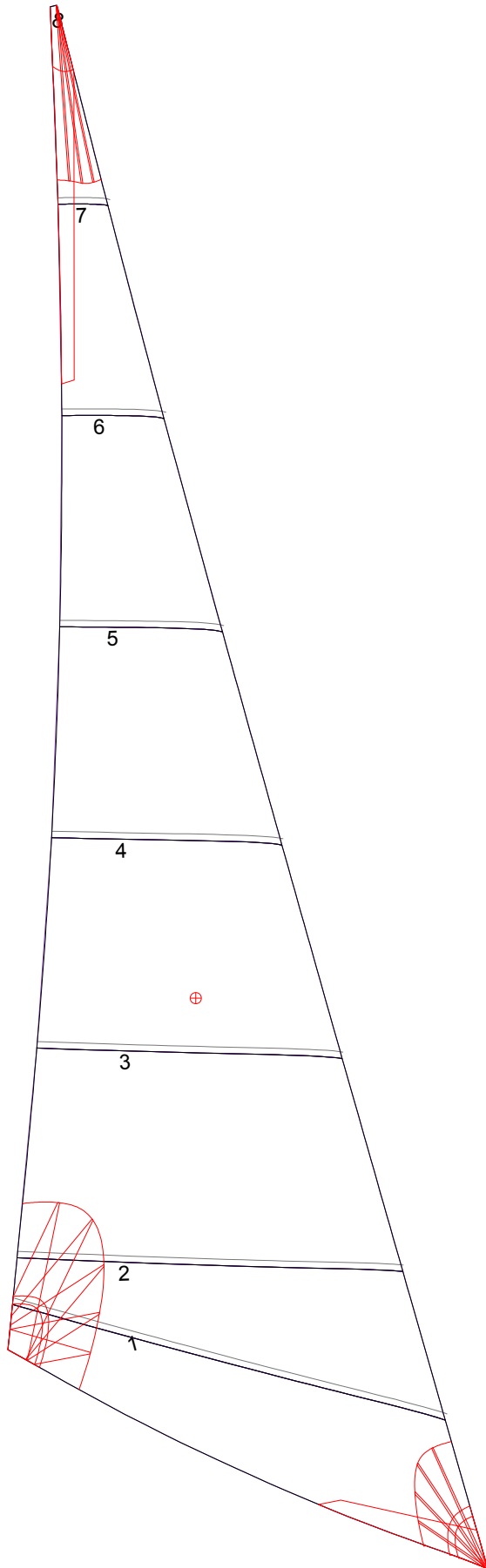
Fanned Luff (@ 5.00% [0.148m])

100% (9.999m) :	-0.000m
90% (9.000m) :	-0.034m
80% (7.999m) :	-0.059m
70% (7.000m) :	-0.071m
60% (5.999m) :	-0.073m
50% (5.000m) :	-0.067m
40% (4.000m) :	-0.057m
30% (3.000m) :	-0.043m
20% (2.000m) :	-0.029m
10% (0.999m) :	-0.015m
0% (0.000m) :	0.000m

Before BSeam

0.000m
-0.013m
-0.019m
-0.017m
-0.011m
-0.002m
0.005m
0.010m
0.011m
0.008m
0.000m

Genoa: 7001119 Mike-1 Heavy JibV1.des



Seam Allowances			
Zone: 1	Split	Radial	Cross
	0.040m	0.040m	0.040m

Edge Excesses			
Sail:	Luff	Leech	Foot
	0.000m	0.000m	0.000m

Total Seam Lengths (m)

Horizontal	10.78
Radial/Vertical	0.00
Bi-Radial Split	0.00

Materials

Material	Area (m ²)	Panels
Material 1	12.14	1,2,3,4,5 6,7,8