

Genoa: 7001107 Niels Grand Soliel 52 JibV3.des

Design Info
=====

Design File:
\\NAS\Engineering files\Queenie-Customer Order\Fareast Sails\2023 Order\Need to be Confirmed\7001107 Niels\7001

Initial Design Date: 17/2/2024
Boat:

Comments:

Client:

Design Data
=====

Genoa

Measurements

Luff geodesic: 20.120m
Leech geodesic: 18.684m
Foot geodesic: 6.863m
Headboard width: 0.055m
Luff perpendicular (HLP): 6.400m
Upper width (HUW): 0.701m
Three-quarter width (HTW): 1.382m
Half width (HHW): 2.898m
Quarter width (HQW): 4.592m
Foot median: 19.257m
ORC Headsail area: 61.185m?
IRC Headsail area: 61.033m?
Surface area: 61.152m?
Forestay height: 21.350m
J: 6.400m

Draft Stripes

1, Luff: 5.046m ; Leech: 4.187m ;
2, Luff: 10.091m ; Leech: 9.018m ;
3, Luff: 15.122m ; Leech: 13.822m ;

Luff Curve

20.118m, 0.000m
18.446m, 0.050m
16.597m, 0.090m
14.970m, 0.111m
13.077m, 0.119m
10.011m, 0.104m
6.538m, 0.071m
3.400m, 0.035m
0.000m, 0.000m

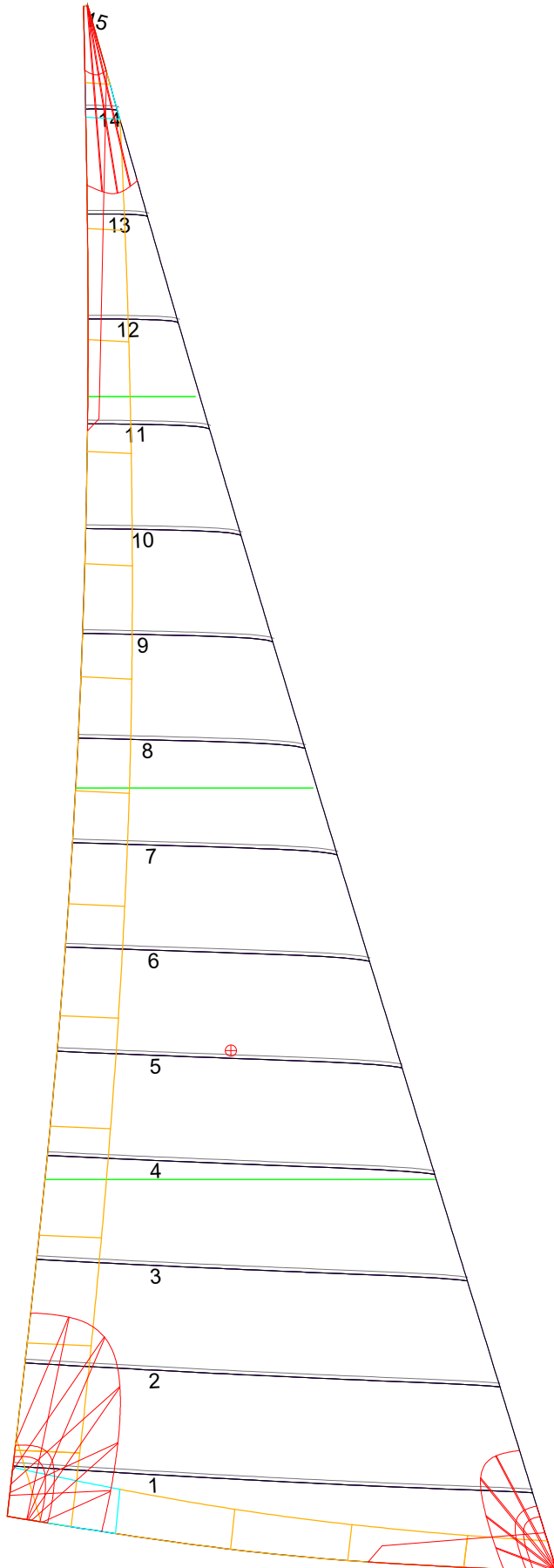
Fanned Luff (@ 5.00% [0.338m])

100% (20.118m) : 0.000m
90% (18.106m) : -0.052m
80% (16.096m) : -0.091m
70% (14.083m) : -0.111m
60% (12.071m) : -0.116m
50% (10.059m) : -0.107m
40% (8.048m) : -0.091m
30% (6.035m) : -0.071m
20% (4.024m) : -0.048m
10% (2.011m) : -0.025m
0% (0.000m) : 0.000m

Before BSeam

-0.000m
-0.008m
-0.007m
0.002m
0.017m
0.032m
0.042m
0.044m
0.040m
0.027m
0.000m

Genoa: 7001107 Niels Grand Soliel 52 JibV3.des



Seam Allowances

Zone:	Split	Radial	Cross
Zone: 1	0.045m	0.045m	0.045m
Cover 1	0.025m	0.025m	0.025m
Cover 2	0.025m	0.025m	0.025m
Cover 3	0.000m	0.000m	0.000m
Cover 4	0.000m	0.000m	0.000m

Edge Excesses

Sail:	Luff	Leech	Foot
Sail:	0.000m	0.000m	0.000m
Cover 0	0.070m	0.100m	0.070m
Cover 1	0.070m	0.070m	0.100m
Cover 2	0.000m	0.070m	0.070m
Cover 3	0.000m	0.070m	0.070m

Total Seam Lengths (m)

Horizontal	46.13
Radial/Vertical	0.00
Bi-Radial Split	0.00

Materials

Material	Area (m ²)	Panels
Material 1	61.30	1,2,3,4,5 6,7,8,9,10 11,12,13,14,15