

# Mainsail: 7001101 Yves Farr38MH MainsailV1.des

Design Info  
=====

Design File:  
\\NAS\Engineering files\Queenie-Customer Order\Fareast Sails\2023 Order\Need to be Confirmed\7001101 Yves\7001

Initial Design Date: 6/11/2023  
Boat:  
Farr 38MH  
Client:

Comments:

Design Data  
=====

Main

Measurements

Luff geodesic: 12.177m  
Leech geodesic: 13.023m  
Foot geodesic: 4.851m  
Head geodesic: 0.150m  
Upper width (MUW): 0.978m  
Three-quarter width (MTW): 1.793m  
Half width (MHW): 3.087m  
Quarter width (MQW): 4.088m  
Foot median: 12.552m  
ORC Mainsail area: 34.921m?  
Surface area: 36.105m?  
Clew height: 0.001m  
Mast rake: 0.000m

Battens

Position	Length	Roach	Angle	Luff	Leech	Full
82.000%	1.444m	0.298m	69.762?	9.976m	10.631m	Full
62.000%	2.584m	0.399m	69.762?	7.542m	8.038m	Full
42.000%	3.483m	0.349m	69.762?	5.108m	5.445m	Full
22.000%	4.209m	0.213m	69.762?	2.675m	2.852m	Full

Reefing Points

1, Luff: 1.525m ; Leech: 1.569m ; Offset: 0.000m ; Number Eyelets: 0  
2, Luff: 3.169m ; Leech: 3.200m ; Offset: 0.000m ; Number Eyelets: 0

Draft Stripes

1, Luff: 3.044m ; Leech: 3.112m ;  
2, Luff: 6.087m ; Leech: 6.334m ;  
3, Luff: 9.130m ; Leech: 9.599m ;

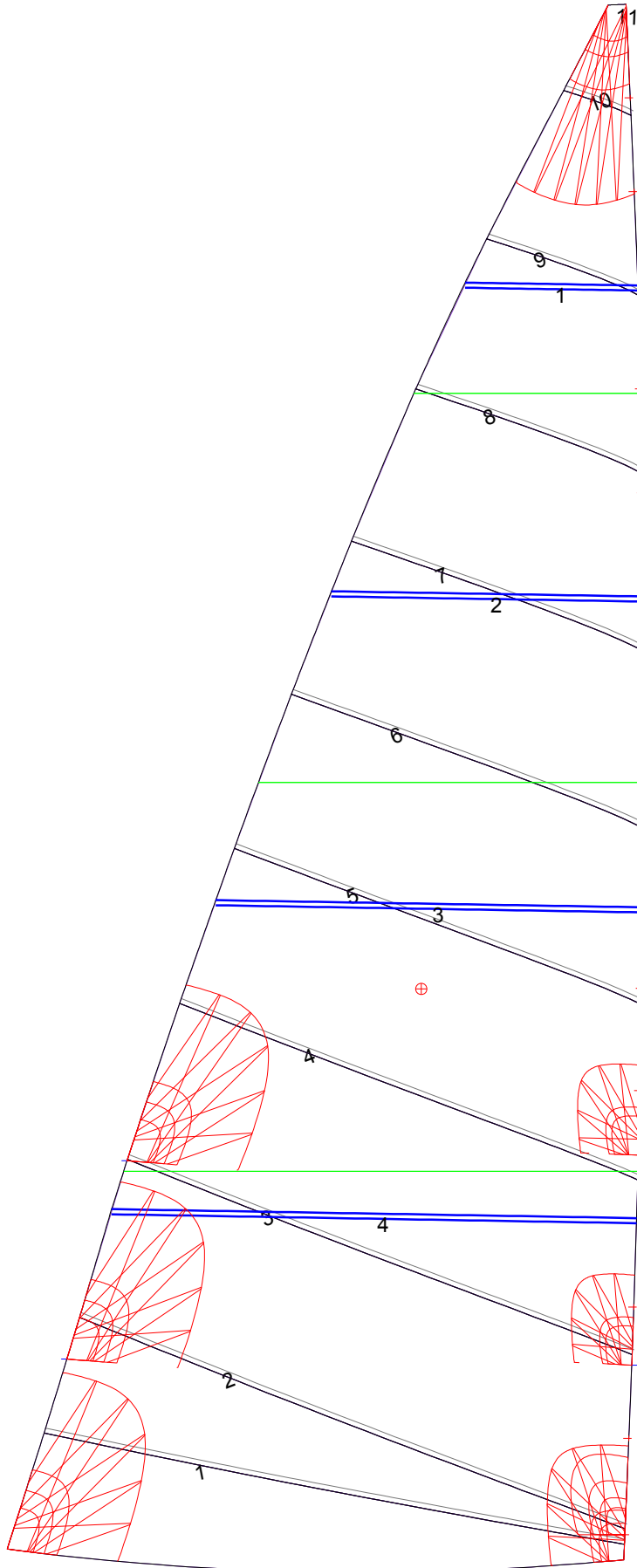
Luff Slides

1, Position: 0.951m  
2, Position: 1.980m  
3, Position: 3.674m  
4, Position: 4.475m  
5, Position: 5.919m  
6, Position: 6.730m  
7, Position: 8.353m  
8, Position: 9.165m  
9, Position: 10.710m  
10, Position: 11.443m

Luff Curve

Luff Curve		Fanned Luff (@ 5.00% [0.241m])	Before BSeam
12.175m,	0.000m	100% (12.177m) :	0.000m
10.657m,	-0.069m	90% (10.960m) :	0.041m
9.131m,	-0.119m	80% (9.742m) :	0.077m
7.601m,	-0.140m	70% (8.524m) :	0.097m
6.087m,	-0.142m	60% (7.306m) :	0.105m
4.536m,	-0.132m	50% (6.088m) :	0.106m
3.044m,	-0.105m	40% (4.871m) :	0.100m
1.517m,	-0.060m	30% (3.653m) :	0.087m
0.000m,	0.000m	20% (2.435m) :	0.065m
		10% (1.218m) :	0.035m
		0% (0.000m) :	0.000m

# Mainsail: 7001101 Yves Farr38MH MainsailV1.des



Seam Allowances			
Zone: 1	Split	Radial	Cross
	0.040m	0.040m	0.040m

Edge Excesses			
Sail:	Luff	Leech	Foot
	0.000m	0.000m	0.000m

Total Seam Lengths (m)

Horizontal	30.68
Radial/Vertical	0.00
Bi-Radial Split	0.00

Materials

Material	Area (m <sup>2</sup> )	Panels
Material 1	36.12	1,2,3,4,5 6,7,8,9,10 11