

Genoa: 7001023 Rune-2 Headsail.des

Design Info
=====

Design File:
\\NAS\Engineering files\Queenie-Customer Order\Fareast Sails\2023 Order\Need to be Confirmed\7001023 Rune\700

Initial Design Date: 3/11/2023
Boat:

Comments:

Client:

Design Data
=====

Genoa

Measurements

Luff geodesic: 13.760m
Leech geodesic: 13.620m
Foot geodesic: 6.000m
Headboard width: 0.035m
Luff perpendicular (HLP): 5.847m
Upper width (HUW): 0.627m
Three-quarter width (HTW): 1.272m
Half width (HHW): 2.702m
Quarter width (HQW): 4.241m
Foot median: 13.603m
ORC Headsail area: 38.530m?
IRC Headsail area: 38.420m?
Surface area: 38.883m?
Forestay height: 14.600m
J: 3.700m

Draft Stripes

1, Luff: 3.453m ; Leech: 3.452m ;
2, Luff: 6.904m ; Leech: 6.853m ;
3, Luff: 10.345m ; Leech: 10.216m ;

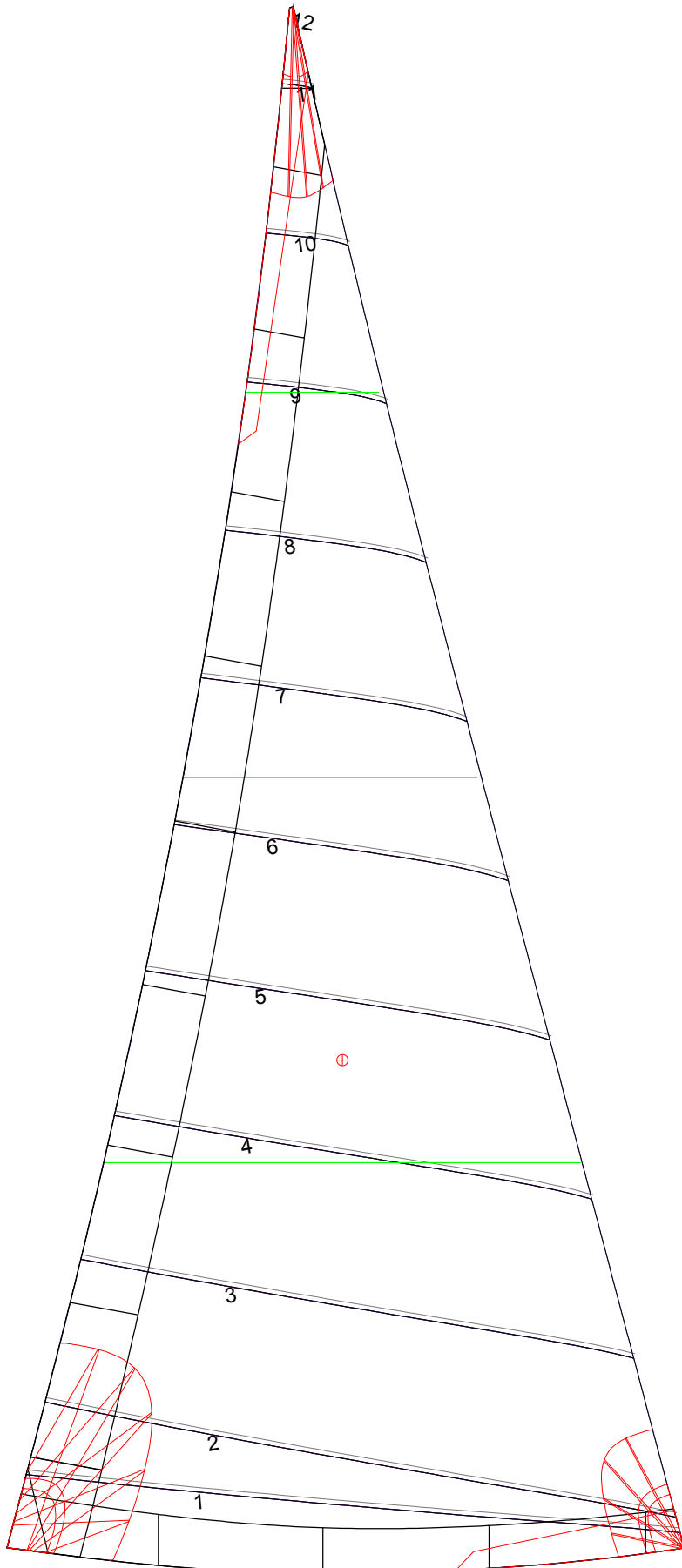
Luff Curve

13.757m, 0.000m
12.614m, 0.047m
11.350m, 0.084m
10.237m, 0.104m
8.943m, 0.111m
6.846m, 0.098m
4.471m, 0.066m
2.325m, 0.033m
0.000m, 0.000m

Fanned Luff (@ 5.00% [0.293m])

		Before BSeam
100% (13.758m) :	0.000m	0.000m
90% (12.381m) :	-0.052m	-0.013m
80% (11.008m) :	-0.088m	-0.014m
70% (9.631m) :	-0.107m	-0.004m
60% (8.255m) :	-0.108m	0.014m
50% (6.879m) :	-0.097m	0.032m
40% (5.503m) :	-0.081m	0.045m
30% (4.127m) :	-0.062m	0.050m
20% (2.752m) :	-0.042m	0.043m
10% (1.375m) :	-0.021m	0.026m
0% (0.000m) :	-0.000m	0.000m

Genoa: 7001023 Rune-2 Headsail.des



Seam Allowances

Zone:	Split	Radial	Cross
Zone: 1	0.040m	0.040m	0.040m
Cover 1	0.025m	0.025m	0.025m
Cover 2	0.025m	0.025m	0.025m
Cover 3	0.000m	0.000m	0.000m
Cover 4	0.000m	0.000m	0.000m

Edge Excesses

Sail:	Luff	Leech	Foot
Sail:	0.000m	0.000m	0.000m
Cover 0	0.070m	0.100m	0.070m
Cover 1	0.070m	0.070m	0.100m
Cover 2	0.000m	0.070m	0.070m
Cover 3	0.000m	0.070m	0.070m

Total Seam Lengths (m)

Horizontal	34.56
Radial/Vertical	0.00
Bi-Radial Split	0.00

Materials

Material	Area (m ²)	Panels
Material 1	38.95	1,2,3,4,5 6,7,8,9,10 11,12