

Genoa: 7001016 Ellen HeadsailV2.des

Design Info
=====

Design File:
\\NAS\Engineering files\Queenie-Customer Order\Fareast Sails\2023 Order\Need to be Confirmed\7001016 Ellen\7001

Initial Design Date: 27/10/2023
Boat:

Comments:
UPDATE:
tack height off deck 27inch

Client:

Design Data
=====

Genoa

Measurements

Luff geodesic:	48.000Ft
Leech geodesic:	43.000Ft
Foot geodesic:	19.540Ft
Headboard width:	0.112Ft
Luff perpendicular (HLP):	17.622Ft
Upper width (HUW):	1.956Ft
Three-quarter width (HTW):	3.865Ft
Half width (HHW):	8.094Ft
Quarter width (HQW):	12.728Ft
Foot median:	45.268Ft
ORC Headsail area:	404.570Ft?
IRC Headsail area:	403.683Ft?
Surface area:	410.189Ft?
Forestay height:	50.580Ft
J:	15.830Ft

Draft Stripes

1, Luff: 12.040Ft ; Leech: 8.370Ft ;
2, Luff: 24.078Ft ; Leech: 19.941Ft ;
3, Luff: 36.080Ft ; Leech: 31.394Ft ;

Luff Curve

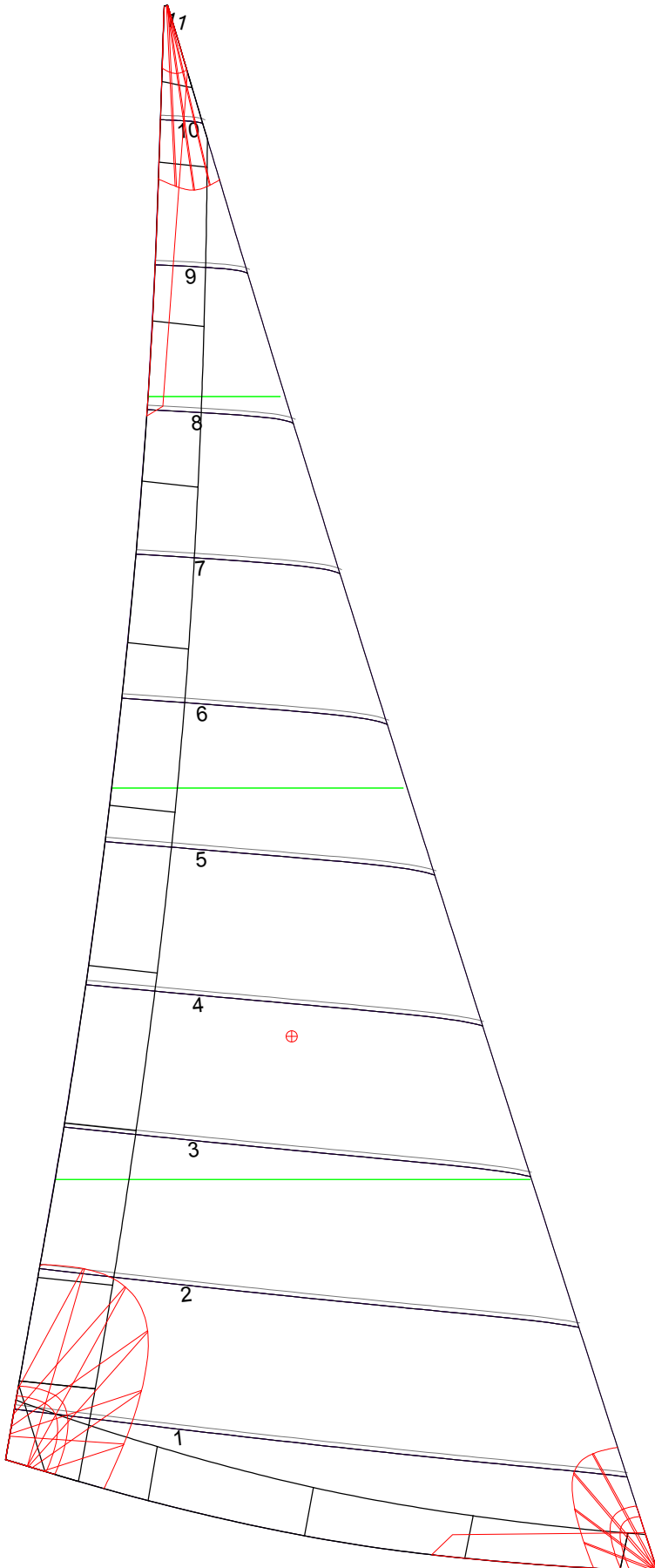
47.994Ft,	0.000Ft
44.006Ft,	0.121Ft
39.595Ft,	0.218Ft
35.712Ft,	0.269Ft
31.197Ft,	0.288Ft
23.884Ft,	0.253Ft
15.598Ft,	0.172Ft
8.112Ft,	0.086Ft
0.000Ft,	0.000Ft

Fanned Luff (@ 5.00% [0.954Ft])

100% (47.995Ft) :	0.000Ft	-0.000Ft
90% (43.197Ft) :	-0.128Ft	0.002Ft
80% (38.398Ft) :	-0.227Ft	0.018Ft
70% (33.598Ft) :	-0.280Ft	0.054Ft
60% (28.798Ft) :	-0.292Ft	0.098Ft
50% (23.998Ft) :	-0.272Ft	0.138Ft
40% (19.199Ft) :	-0.233Ft	0.160Ft
30% (14.398Ft) :	-0.183Ft	0.158Ft
20% (9.600Ft) :	-0.126Ft	0.136Ft
10% (4.797Ft) :	-0.068Ft	0.086Ft
0% (0.000Ft) :	0.000Ft	0.000Ft

Before BSeam

Genoa: 7001016 Ellen HeadsailV2.des



Seam Allowances

Zone:	Split	Radial	Cross
Zone: 1	0.131Ft	0.131Ft	0.131Ft
Cover 1	0.082Ft	0.082Ft	0.082Ft
Cover 2	0.082Ft	0.082Ft	0.082Ft
Cover 3	0.000Ft	0.000Ft	0.000Ft
Cover 4	0.000Ft	0.000Ft	0.000Ft

Edge Excesses

Sail:	Luff	Leech	Foot
Sail:	0.000Ft	0.000Ft	0.000Ft
Cover 0	0.230Ft	0.328Ft	0.230Ft
Cover 1	0.230Ft	0.230Ft	0.328Ft
Cover 2	0.000Ft	0.230Ft	0.230Ft
Cover 3	0.000Ft	0.230Ft	0.230Ft

Total Seam Lengths (Ft)

Horizontal	94.64
Radial/Vertical	0.00
Bi-Radial Split	0.00

Materials

Material	Area (Ft ²)	Panels
Material 1	411.30	1,2,3,4,5 6,7,8,9,10 11