

# Mainsail: 7001010 Muriel MainsailV1.des

Design Info  
=====

Design File:  
\\NAS\Engineering files\Queenie-Customer Order\Fareast Sails\2023 Order\Need to be Confirmed\7001010 Muriel\700

Initial Design Date: 18/10/2023  
Boat:

Comments:

Client:

Design Data  
=====

Main

Measurements

Luff geodesic: 9.028m  
Leech geodesic: 9.506m  
Foot geodesic: 3.247m  
Head geodesic: 0.115m  
Upper width (MUW): 0.687m  
Three-quarter width (MTW): 1.240m  
Half width (MHW): 2.130m  
Quarter width (MQW): 2.786m  
Foot median: 9.297m  
ORC Mainsail area: 17.700m?  
Surface area: 18.392m?  
Clew height: 0.100m  
Mast rake: 0.000m

Battens

Position	Length	Roach	Angle	Luff	Leech	Full
82.000%	1.025m	0.278m	70.763?	7.416m	7.765m	Full
62.000%	0.830m	0.379m	70.763?	5.628m	5.871m	
42.000%	0.830m	0.351m	70.763?	3.840m	3.977m	
22.000%	0.830m	0.229m	70.763?	2.052m	2.083m	

Reefing Points

1, Luff: 1.218m ; Leech: 1.250m ; Offset: 0.000m ; Number Eyelets: 0  
2, Luff: 2.482m ; Leech: 2.549m ; Offset: 0.000m ; Number Eyelets: 0

Draft Stripes

1, Luff: 2.978m ; Leech: 2.993m ;  
2, Luff: 5.957m ; Leech: 6.124m ;

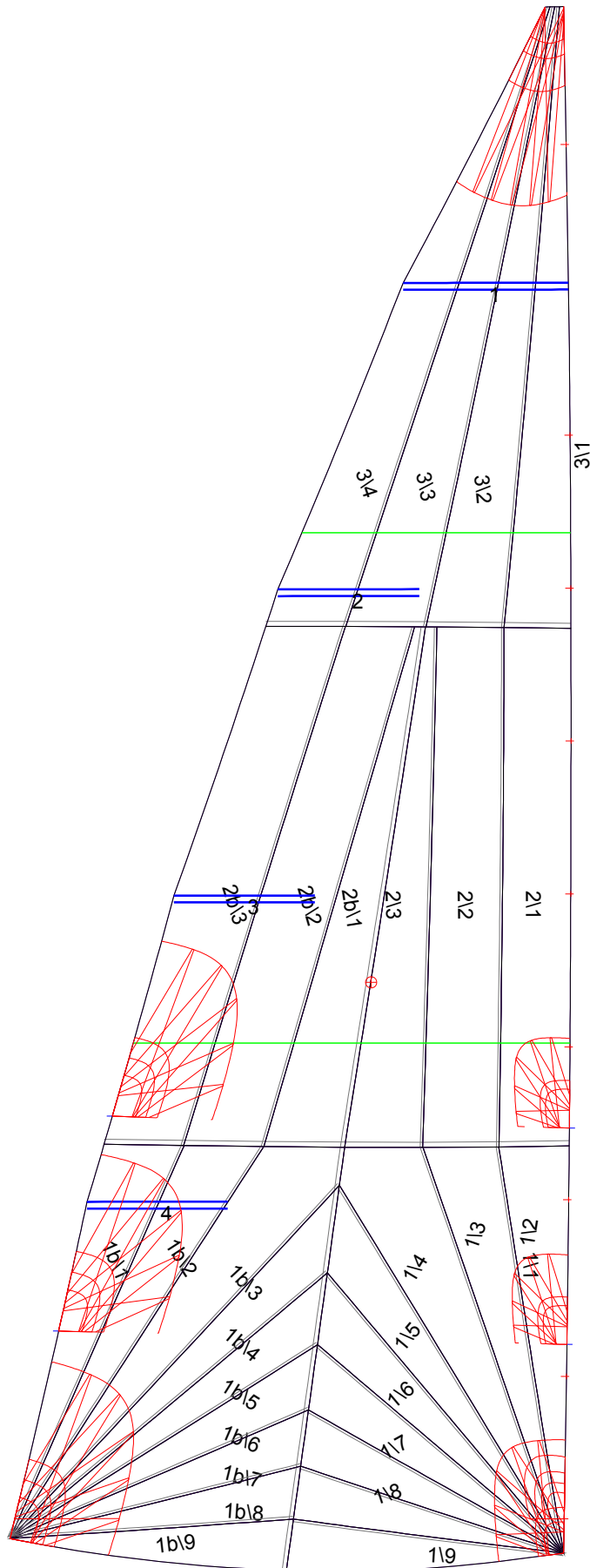
Luff Slides

1, Position: 1.031m  
2, Position: 2.062m  
3, Position: 2.955m  
4, Position: 3.848m  
5, Position: 4.741m  
6, Position: 5.633m  
7, Position: 6.526m  
8, Position: 8.223m

Luff Curve

		Fanned Luff (@ 5.00% [0.162m])	Before BSeam
9.028m,	0.000m	100% (9.028m) :	0.000m
7.903m,	-0.021m	90% (8.125m) :	0.034m
6.771m,	-0.036m	80% (7.222m) :	0.065m
5.636m,	-0.042m	70% (6.320m) :	0.087m
4.514m,	-0.043m	60% (5.417m) :	0.099m
3.364m,	-0.040m	50% (4.514m) :	0.101m
2.257m,	-0.032m	40% (3.611m) :	0.093m
1.125m,	-0.018m	30% (2.708m) :	0.077m
0.000m,	0.000m	20% (1.806m) :	0.054m
		10% (0.903m) :	0.026m
		0% (0.000m) :	0.000m

# Mainsail: 7001010 Muriel MainsailV1.des



## Seam Allowances

Zone:	Split	Radial	Cross
Zone: 1/a	0.025m	0.015m	0.030m
Zone: 1/b	0.025m	0.015m	0.030m
Zone: 2/a	0.025m	0.015m	0.030m
Zone: 2/b	0.025m	0.015m	0.030m
Zone: 3	0.025m	0.015m	0.030m

## Edge Excesses

Sail:	Luff	Leech	Foot
Sail:	0.000m	0.000m	0.000m

## Total Seam Lengths (m)

Horizontal	4.67
Radial/Vertical	58.36
Bi-Radial Split	5.75

## Materials

Material	Area (m <sup>2</sup> )	Panels
Material 1	18.42	1\1,1\2,1\3,1\4,1\5 1\6,1\7,1\8,1\9,1b1 1b2,1b3,1b4,1b5,1b6 1b7,1b8,1b9,2\1,2\2 2\3,2b1,2b2,2b3,3\1 3\2,3\3,3\4