

Mainsail: 7000918 Curtis C&C 32 mainsail.des

Design Info
=====

Design File:
\\NAS\Engineering files\Queenie-Customer Order\Fareast Sails\2024 Orders\Need to be Confirmed\7000918 Curtis C&

Initial Design Date: 14/3/2024
Boat:
C&C 32
Client:

Comments:

Design Data
=====

Main

Measurements

Luff geodesic: 10.632m
Leech geodesic: 11.115m
Foot geodesic: 3.415m
Head geodesic: 0.115m
Upper width (MUW): 0.703m
Three-quarter width (MTW): 1.255m
Half width (MHW): 2.155m
Quarter width (MQW): 2.858m
Foot median: 10.847m
ORC Mainsail area: 21.374m?
Surface area: 21.915m?
Clew height: 0.100m
Mast rake: 0.000m

Battens

Position	Length	Roach	Angle	Luff	Leech	Full
82.000%	1.017m	0.235m	74.163?	8.713m	9.083m	Full
62.000%	1.798m	0.305m	74.163?	6.588m	6.868m	Full
42.000%	1.050m	0.269m	74.163?	4.463m	4.652m	
22.000%	0.950m	0.155m	74.163?	2.338m	2.437m	

Reefing Points

1, Luff: 1.297m ; Leech: 1.334m ; Offset: 0.000m ; Number Eyelets: 3
2, Luff: 2.817m ; Leech: 2.895m ; Offset: 0.000m ; Number Eyelets: 2

Draft Stripes

1, Luff: 3.508m ; Leech: 3.536m ;
2, Luff: 7.016m ; Leech: 7.189m ;

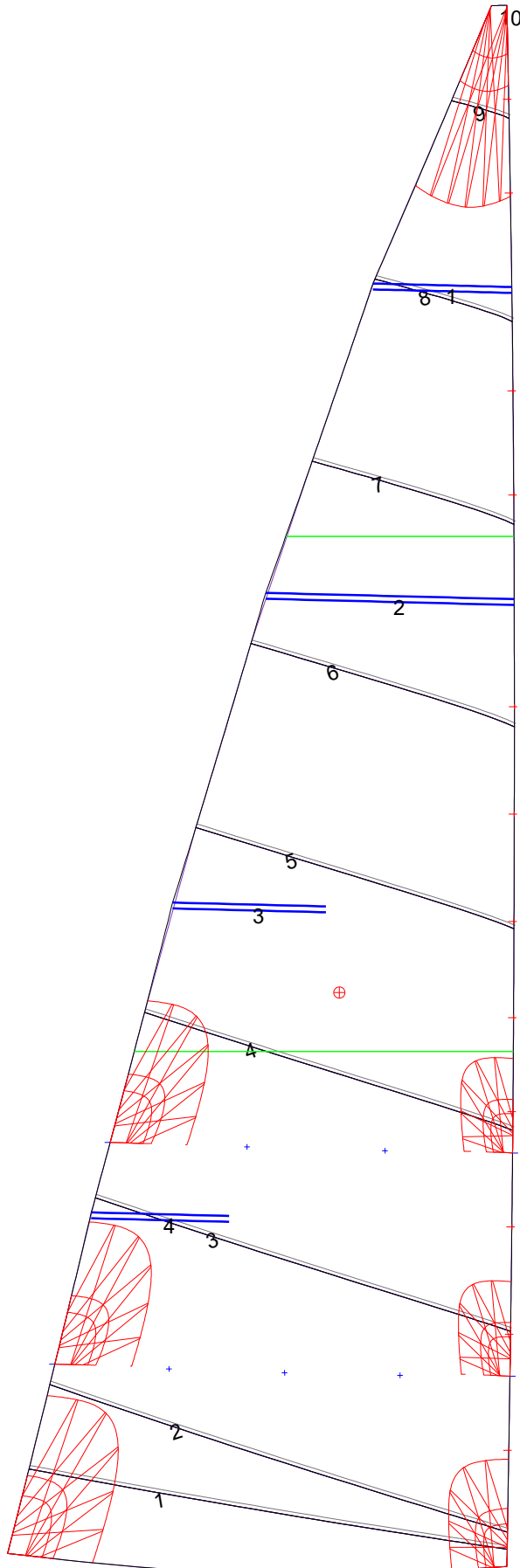
Luff Slides

1, Position: 0.791m
2, Position: 1.582m
3, Position: 2.313m
4, Position: 3.097m
5, Position: 3.737m
6, Position: 4.392m
7, Position: 5.124m
8, Position: 5.855m
9, Position: 7.296m
10, Position: 8.005m
11, Position: 9.353m
12, Position: 9.992m

Luff Curve

		Fanned Luff (@ 5.00% [0.170m])	Before BSeam
10.632m,	0.000m	100% (10.632m) :	0.000m
9.307m,	-0.025m	90% (9.569m) :	0.015m
7.974m,	-0.042m	80% (8.506m) :	0.027m
6.637m,	-0.050m	70% (7.443m) :	0.033m
5.316m,	-0.051m	60% (6.379m) :	0.036m
3.961m,	-0.047m	50% (5.316m) :	0.035m
2.658m,	-0.037m	40% (4.253m) :	0.032m
1.325m,	-0.021m	30% (3.190m) :	0.027m
0.000m,	0.000m	20% (2.126m) :	0.020m
		10% (1.063m) :	0.009m
		0% (0.000m) :	0.000m

Mainsail: 7000918 Curtis C&C 32 mainsail.des



Seam Allowances			
Zone: 1	Split	Radial	Cross
	0.025m	0.025m	0.025m

Edge Excesses			
Sail:	Luff	Leech	Foot
	0.000m	0.000m	0.000m

Total Seam Lengths (m)

Horizontal	19.76
Radial/Vertical	0.00
Bi-Radial Split	0.00

Materials

Material	Area (m ²)	Panels
Material 1	21.92	1,2,3,4,5 6,7,8,9,10