

Genoa: 7000917 Alfred-1 Beneteau First 41s5 HeadsailV1.des

Design Info
=====

Design File:
\\NAS\Engineering files\Queenie-Customer Order\Fareast Sails\2023 Order\Need to be Confirmed\7000917 Alfred\700

Initial Design Date: 22/9/2023
Boat:

Comments:

Client:

Design Data
=====

Genoa

Measurements

Luff geodesic: 14.157m
Leech geodesic: 13.238m
Foot geodesic: 6.375m
Headboard width: 0.033m
Luff perpendicular (HLP): 5.980m
Upper width (HUW): 0.639m
Three-quarter width (HTW): 1.287m
Half width (HHW): 2.725m
Quarter width (HQW): 4.321m
Foot median: 13.545m
ORC Headsail area: 40.325m?
IRC Headsail area: 40.179m?
Surface area: 40.683m?
Forestay height: 15.000m
J: 5.200m

Draft Stripes

1, Luff: 3.557m ; Leech: 3.119m ;
2, Luff: 7.113m ; Leech: 6.498m ;
3, Luff: 10.653m ; Leech: 9.838m ;

Luff Curve

14.154m, 0.000m
12.978m, 0.048m
11.677m, 0.087m
10.532m, 0.107m
9.201m, 0.114m
7.044m, 0.100m
4.600m, 0.068m
2.392m, 0.034m
0.000m, 0.000m

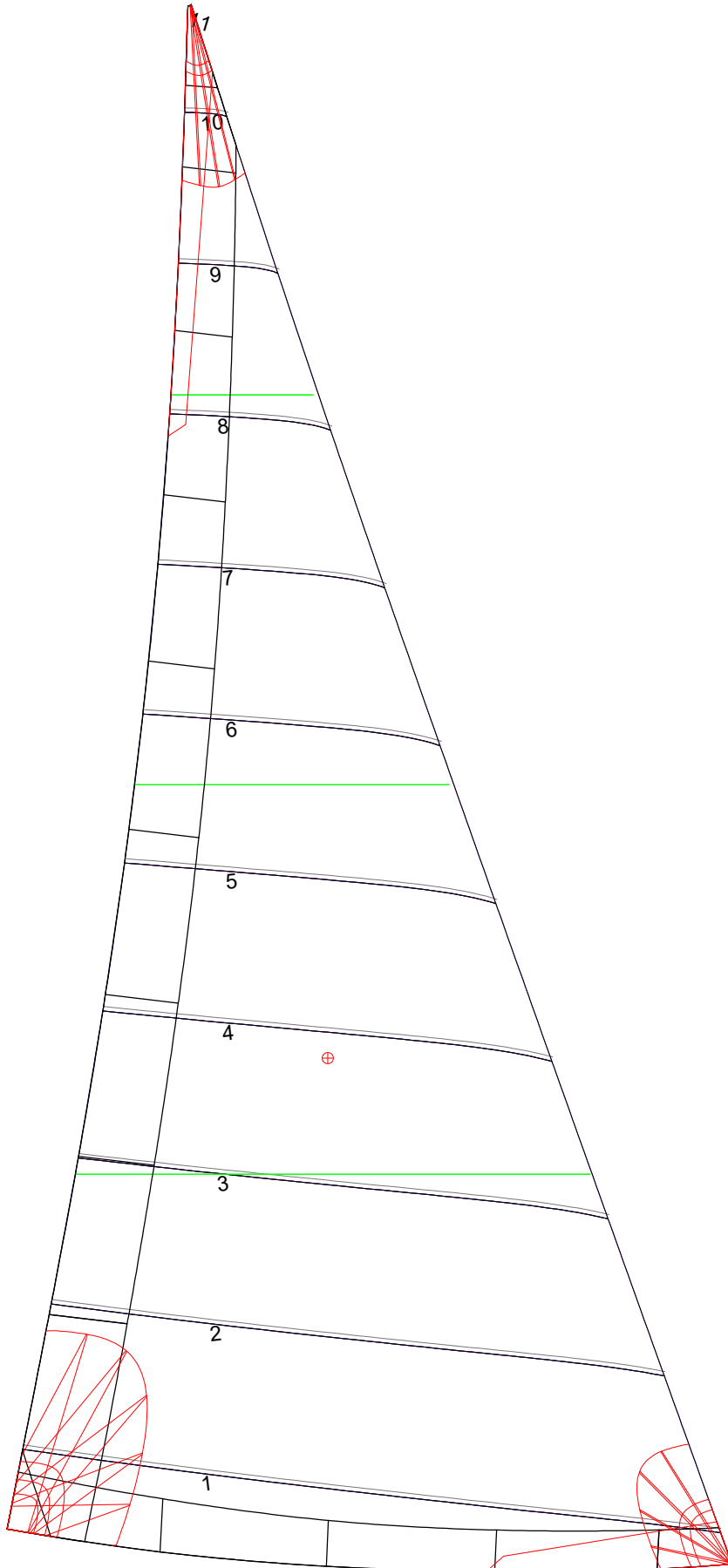
Fanned Luff (@ 5.00% [0.311m])

100% (14.154m) : 0.000m
90% (12.737m) : -0.056m
80% (11.326m) : -0.095m
70% (9.909m) : -0.114m
60% (8.493m) : -0.115m
50% (7.078m) : -0.104m
40% (5.662m) : -0.087m
30% (4.246m) : -0.067m
20% (2.832m) : -0.045m
10% (1.414m) : -0.023m
0% (0.000m) : 0.000m

Before BSeam

0.000m
-0.013m
-0.013m
-0.001m
0.019m
0.038m
0.053m
0.058m
0.051m
0.031m
0.000m

Genoa: 7000917 Alfred-1 Beneteau First 41s5 HeadsailV1.des



Seam Allowances

| Zone: | Split | Radial | Cross |
|---------|--------|--------|--------|
| Zone: 1 | 0.038m | 0.038m | 0.038m |
| Cover 1 | 0.025m | 0.025m | 0.025m |
| Cover 2 | 0.025m | 0.025m | 0.025m |
| Cover 3 | 0.000m | 0.000m | 0.000m |
| Cover 4 | 0.000m | 0.000m | 0.000m |

Edge Excesses

| | Luff | Leech | Foot |
|---------|--------|--------|--------|
| Sail: | 0.000m | 0.000m | 0.000m |
| Cover 0 | 0.070m | 0.100m | 0.070m |
| Cover 1 | 0.070m | 0.070m | 0.100m |
| Cover 2 | 0.000m | 0.070m | 0.070m |
| Cover 3 | 0.000m | 0.070m | 0.070m |

Total Seam Lengths (m)

| | |
|-----------------|-------|
| Horizontal | 31.63 |
| Radial/Vertical | 0.00 |
| Bi-Radial Split | 0.00 |

Materials

| Material | Area (m ²) | Panels |
|------------|------------------------|-------------------------------|
| Material 1 | 40.75 | 1,2,3,4,5 6,7,8,9,10 11 |