

Genoa: 7000916 Peter Hanks jib.des

Design Info
=====

Design File:
\\NAS\Engineering files\Queenie-Customer Order\Fareast Sails\2023 Order\Need to be Confirmed\7000916 Peter\7000

Initial Design Date: 20/9/2023
Boat:

Comments:

Client:

Design Data
=====

Genoa

Measurements

Luff geodesic:	6.833m
Leech geodesic:	5.950m
Foot geodesic:	2.400m
Headboard width:	0.050m
Luff perpendicular (HLP):	2.066m
Upper width (HUW):	0.255m
Three-quarter width (HTW):	0.473m
Half width (HHW):	0.954m
Quarter width (HQW):	1.492m
Foot median:	6.347m
ORC Headsail area:	6.817m?
IRC Headsail area:	6.798m?
Surface area:	6.857m?
Forestay height:	7.200m
J:	2.000m

Draft Stripes

1, Luff: 3.426m ; Leech: 2.643m ;

Luff Slides

- 1, Position: 0.400m
- 2, Position: 1.087m
- 3, Position: 1.774m
- 4, Position: 2.461m
- 5, Position: 3.148m
- 6, Position: 3.835m
- 7, Position: 4.522m
- 8, Position: 5.209m
- 9, Position: 5.896m
- 10, Position: 6.583m

Luff Curve

6.832m,	0.000m
6.264m,	0.017m
5.637m,	0.031m
5.084m,	0.038m
4.441m,	0.041m
3.400m,	0.036m
2.220m,	0.024m
1.155m,	0.012m
0.000m,	0.000m

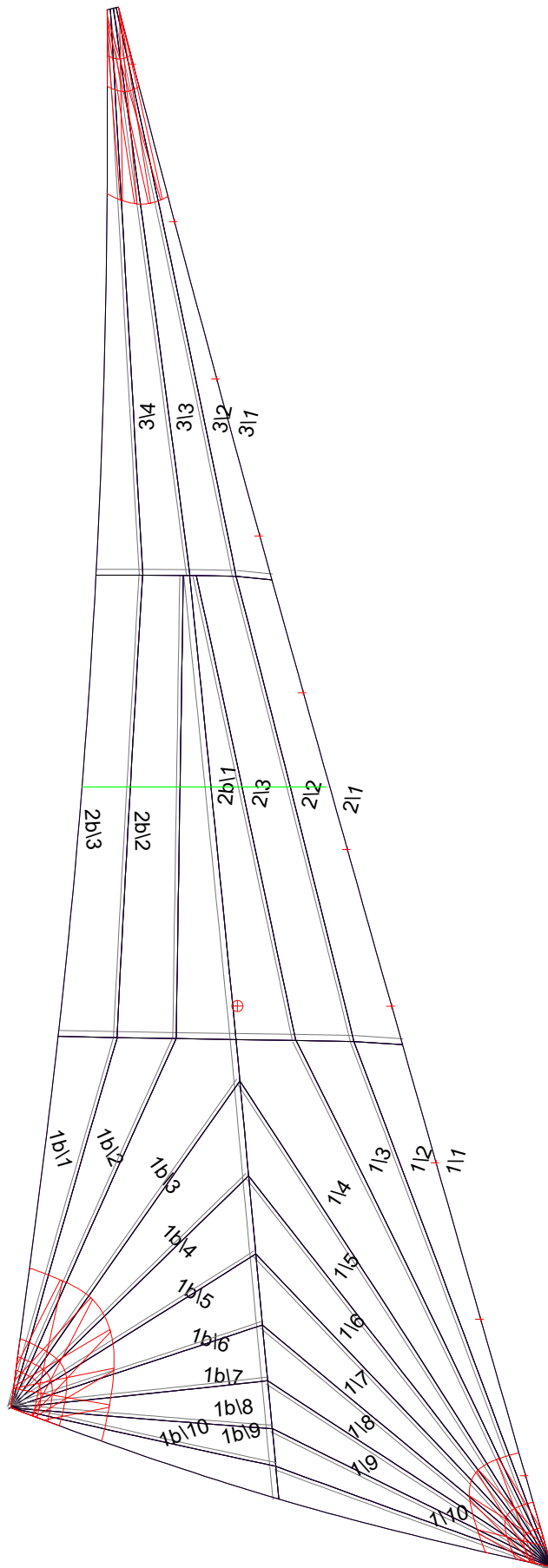
Fanned Luff (@ 5.00% [0.114m])

100% (6.832m) :	-0.000m
90% (6.150m) :	-0.019m
80% (5.466m) :	-0.033m
70% (4.783m) :	-0.040m
60% (4.100m) :	-0.042m
50% (3.416m) :	-0.039m
40% (2.733m) :	-0.033m
30% (2.050m) :	-0.025m
20% (1.367m) :	-0.017m
10% (0.683m) :	-0.009m
0% (0.000m) :	0.000m

Before BSeam

0.000m
-0.002m
-0.002m
0.002m
0.008m
0.013m
0.017m
0.018m
0.016m
0.010m
0.000m

Genoa: 7000916 Peter Hanks jib.des



Seam Allowances

	Split	Radial	Cross
Zone: 1/a	0.025m	0.015m	0.025m
Zone: 1/b	0.025m	0.015m	0.025m
Zone: 2/a	0.025m	0.015m	0.025m
Zone: 2/b	0.025m	0.015m	0.025m
Zone: 3	0.025m	0.015m	0.025m

Edge Excesses

Sail:	Luff	Leech	Foot
	0.000m	0.000m	0.000m

Total Seam Lengths (m)

Horizontal	2.31
Radial/Vertical	44.54
Bi-Radial Split	4.13

Materials

Material	Area (m ²)	Panels
Material 1	6.87	1/1,1/2,1/3,1/4,1/5 1/6,1/7,1/8,1/9,1/10 1b/1,1b/2,1b/3,1b/4,1b/5 1b/6,1b/7,1b/8,1b/9,1b/10 2/1,2/2,2/3,2b/1,2b/2 2b/3,3/1,3/2,3/3,3/4