

Mainsail: 7000911 Jordan S2 MainsailV1.des

Design Info
=====

Design File:
\\NAS\Engineering files\Queenie-Customer Order\Fareast Sails\2023 Order\Need to be Confirmed\7000911 Jordan\70

Initial Design Date: 12/10/2023
Boat:

Comments:
Tack angle 87 degree

Client:

Design Data
=====

Main

Measurements

Luff geodesic: 38.610Ft
 Leech geodesic: 40.235Ft
 Foot geodesic: 13.520Ft
 Head geodesic: 0.377Ft
 Upper width (MUW): 2.690Ft
 Three-quarter width (MTW): 4.892Ft
 Half width (MHW): 8.498Ft
 Quarter width (MQW): 11.249Ft
 Foot median: 39.359Ft
 ORC Mainsail area: 305.155Ft?
 Surface area: 313.088Ft?
 Clew height: 0.328Ft
 Mast rake: 0.000Ft

Battens

Position	Length	Roach	Angle	Luff	Leech	Full
82.000%	3.950Ft	0.928Ft	73.959?	31.632Ft	32.874Ft	Full
62.000%	7.092Ft	1.206Ft	73.959?	23.912Ft	24.856Ft	Full
42.000%	9.598Ft	1.063Ft	73.959?	16.195Ft	16.838Ft	Full
22.000%	11.587Ft	0.614Ft	73.959?	8.482Ft	8.820Ft	Full

Reefing Points

1, Luff: 5.208Ft ; Leech: 5.359Ft ; Offset: 0.000Ft ; Number Eyelets: 3
 2, Luff: 10.611Ft ; Leech: 10.905Ft ; Offset: 0.000Ft ; Number Eyelets: 3

Draft Stripes

1, Luff: 12.733Ft ; Leech: 12.535Ft ;
 2, Luff: 25.473Ft ; Leech: 25.908Ft ;

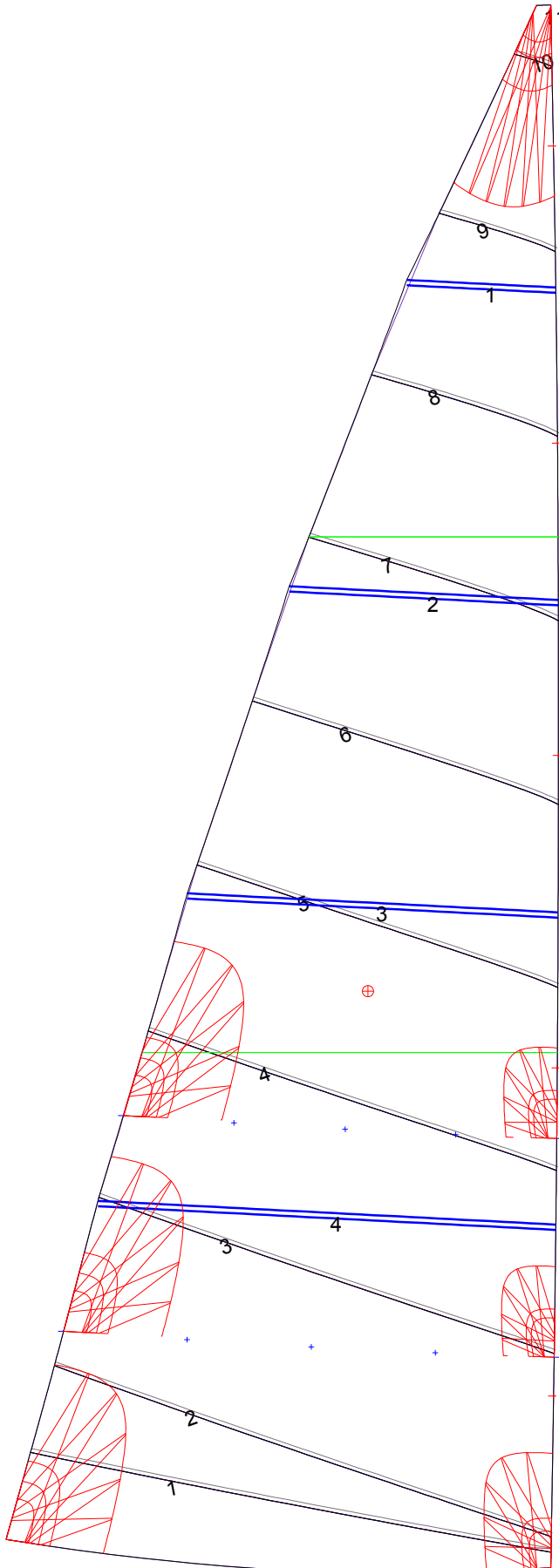
Luff Slides

1, Position: 4.249Ft
 2, Position: 12.355Ft
 3, Position: 20.071Ft
 4, Position: 27.788Ft
 5, Position: 35.128Ft

Luff Curve

		Fanned Luff (@ 5.00% [0.673Ft])	Before BSeam
38.609Ft,	0.000Ft	100% (38.610Ft) :	0.000Ft
33.797Ft,	-0.091Ft	90% (34.750Ft) :	0.152Ft
28.956Ft,	-0.157Ft	80% (30.888Ft) :	0.293Ft
24.104Ft,	-0.185Ft	70% (27.028Ft) :	0.399Ft
19.304Ft,	-0.188Ft	60% (23.166Ft) :	0.453Ft
14.386Ft,	-0.174Ft	50% (19.305Ft) :	0.457Ft
9.652Ft,	-0.139Ft	40% (15.444Ft) :	0.417Ft
4.811Ft,	-0.079Ft	30% (11.583Ft) :	0.340Ft
0.000Ft,	0.000Ft	20% (7.721Ft) :	0.236Ft
		10% (3.862Ft) :	0.114Ft
		0% (0.000Ft) :	0.000Ft

Mainsail: 7000911 Jordan S2 MainsailV1.des



Seam Allowances			
Zone: 1	Split	Radial	Cross
	0.098Ft	0.098Ft	0.098Ft

Edge Excesses			
Sail:	Luff	Leech	Foot
	0.000Ft	0.000Ft	0.000Ft

Total Seam Lengths (Ft)

Horizontal	83.80
Radial/Vertical	0.00
Bi-Radial Split	0.00

Materials

Material	Area (Ft ²)	Panels
Material 1	313.22	1,2,3,4,5 6,7,8,9,10 11