

Mainsail: 7000905 Chris -1 Mainsail.des

Design Info
=====

Design File:
\\NAS\Engineering files\Queenie-Customer Order\Fareast Sails\2023 Order\Need to be Confirmed\7000905 Chris\7000

Initial Design Date: 20/9/2023
Boat:

Comments:

Client:

Design Data
=====

Main

Measurements

Luff geodesic:	276.22In
Leech geodesic:	293.55In
Foot geodesic:	109.41In
Head geodesic:	4.21In
Upper width (MUW):	20.84In
Three-quarter width (MTW):	37.76In
Half width (MHW):	66.73In
Quarter width (MQW):	90.20In
Foot median:	284.12In
ORC Mainsail area:	120.555Ft²
Surface area:	124.357Ft²
Clew height:	3.94In
Mast rake:	0.00In

Battens

Position	Length	Roach	Angle	Luff	Leech	Full
80.000%	22.82In	5.47In	70.481?	220.81In	234.21In	
60.000%	32.60In	7.76In	70.481?	165.59In	175.66In	
40.000%	32.60In	6.84In	70.481?	110.38In	117.10In	
20.000%	27.16In	3.95In	70.481?	55.19In	58.55In	

Reefing Points

1, Luff: 40.04In ; Leech: 41.79In ; Offset: 0.00In ; Number Eyelets: 2

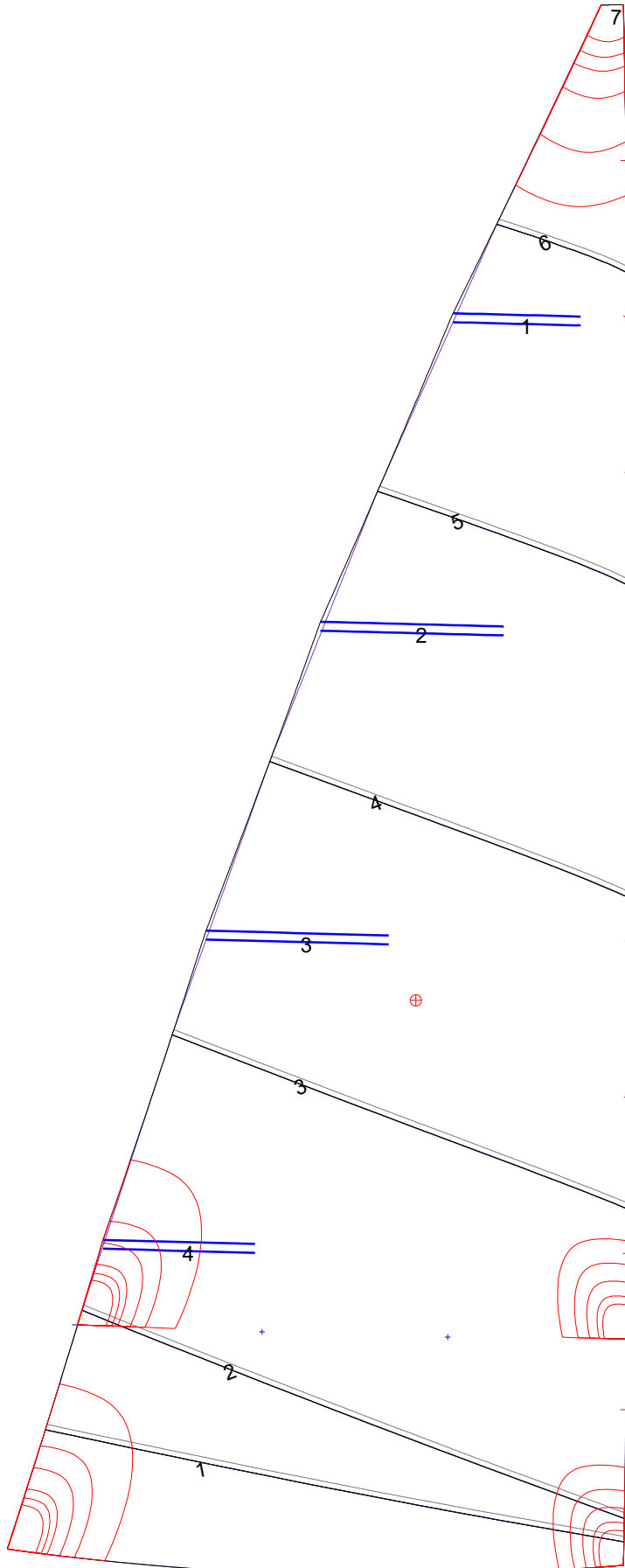
Luff Slides

- 1, Position: 27.56In
- 2, Position: 55.20In
- 3, Position: 82.83In
- 4, Position: 110.47In
- 5, Position: 138.11In
- 6, Position: 165.75In
- 7, Position: 193.39In
- 8, Position: 221.02In
- 9, Position: 248.66In

Luff Curve

		Fanned Luff (@ 5.00% [5.45In])	Before BSeam
276.21In,	0.00In	100% (276.22In) :	0.00In
241.79In,	-0.64In	90% (248.60In) :	0.39In
207.16In,	-1.09In	80% (220.98In) :	0.73In
172.44In,	-1.29In	70% (193.36In) :	0.91In
138.10In,	-1.31In	60% (165.73In) :	0.97In
102.92In,	-1.21In	50% (138.11In) :	0.96In
69.05In,	-0.97In	40% (110.49In) :	0.88In
34.42In,	-0.55In	30% (82.87In) :	0.75In
0.00In,	0.00In	20% (55.24In) :	0.54In
		10% (27.62In) :	0.26In
		0% (0.00In) :	0.00In

Mainsail: 7000905 Chris -1 Mainsail.des



Seam Allowances			
Zone: 1	Split	Radial	Cross
	0.984In	0.984In	0.984In

Edge Excesses			
Sail:	Luff	Leech	Foot
	0.000In	0.000In	0.000In

Total Seam Lengths (In)

Horizontal	444.53
Radial/Vertical	0.00
Bi-Radial Split	0.00

Materials

Material	Area (Ft ²)	Panels
Material 1	123.97	1,2,3,4,5 6,7