

# Mainsail: 7000718 Tom Vindo 65 MS Mizzen(1).des

## Design Info

=====

## Design File:

\\NAS\Engineering files\Queenie-Customer Order\Fareast Sails\2023 Order\Need Confrim Order\7000718 Tom\70007

Initial Design Date: 3/8/2023

Boat:

Comments:

Client:

## Design Data

=====

### Main

#### Measurements

Luff geodesic:	6.435m
Leech geodesic:	6.778m
Foot geodesic:	2.376m
Head geodesic:	0.115m
Upper width (MUW):	0.451m
Three-quarter width (MTW):	0.805m
Half width (MHW):	1.432m
Quarter width (MQW):	1.945m
Foot median:	6.601m
ORC Mainsail area:	8.724m?
Surface area:	8.913m?
Clew height:	0.100m
Mast rake:	0.000m

#### Battens

Position	Length	Roach	Angle	Luff	Leech	Full
75.000%	0.833m	0.094m	71.869?	4.824m	5.068m	Full
50.000%	1.452m	0.116m	71.869?	3.218m	3.379m	Full
25.000%	1.954m	0.079m	71.869?	1.612m	1.689m	Full

#### Reefing Points

1, Luff: 0.868m ; Leech: 0.908m ; Offset: 0.000m ; Number Eyelets: 2

#### Draft Stripes

1, Luff: 2.123m ; Leech: 2.169m ;  
2, Luff: 4.246m ; Leech: 4.418m ;

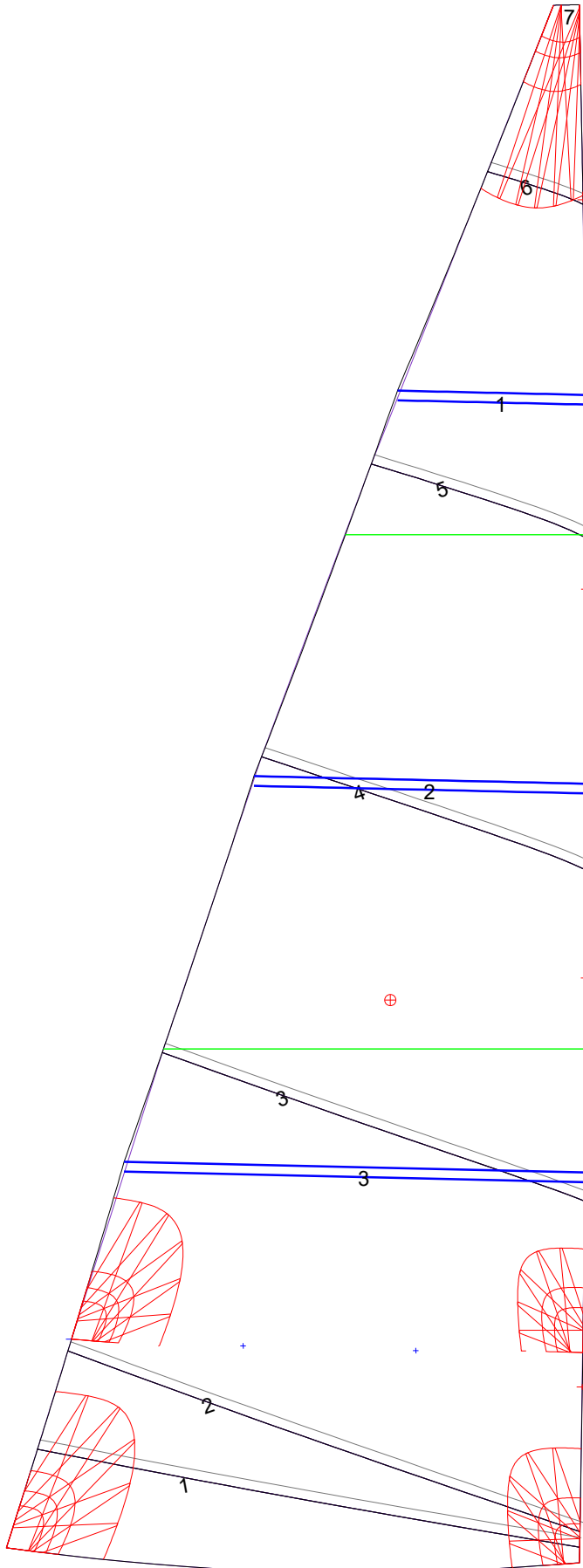
#### Luff Slides

1, Position: 0.726m  
2, Position: 2.415m  
3, Position: 4.021m  
4, Position: 5.629m

#### Luff Curve

		Fanned Luff (@ 5.00% [0.118m])	Before BSeam
6.435m,	0.000m	100% (6.435m) :	0.000m
5.633m,	-0.015m	90% (5.792m) :	0.024m
4.826m,	-0.025m	80% (5.148m) :	0.047m
4.017m,	-0.030m	70% (4.505m) :	0.065m
3.217m,	-0.031m	60% (3.861m) :	0.075m
2.398m,	-0.028m	50% (3.218m) :	0.077m
1.609m,	-0.023m	40% (2.574m) :	0.071m
0.802m,	-0.013m	30% (1.931m) :	0.058m
0.000m,	0.000m	20% (1.287m) :	0.040m
		10% (0.644m) :	0.019m
		0% (0.000m) :	0.000m

# Mainsail: 7000718 Tom Vindo 65 MS Mizzen(1).des



Seam Allowances			
Zone: 1	Split	Radial	Cross
	0.040m	0.040m	0.040m

Edge Excesses			
Sail:	Luff	Leech	Foot
	0.000m	0.000m	0.000m

### Total Seam Lengths (m)

Horizontal	9.38
Radial/Vertical	0.00
Bi-Radial Split	0.00

### Materials

Material	Area (m <sup>2</sup> )	Panels
Material 1	8.91	1,2,3,4,5 6,7