

Mainsail: 7000709 Justin Grand Soleil 40 4D Membrane MainV1.des

Design Info
=====

Design File:
\\NAS\Engineering files\Queenie-Customer Order\Fareast Sails\2023 Order\Passed to Production\7000709 Justin\7000

Initial Design Date: 20/9/2023
Boat:

Comments:

Client:

Design Data
=====

Main

Measurements

Luff geodesic:	565.51In
Leech geodesic:	599.21In
Foot geodesic:	205.51In
Head geodesic:	6.02In
Upper width (MUW):	38.56In
Three-quarter width (MTW):	70.23In
Half width (MHW):	124.94In
Quarter width (MQW):	169.77In
Foot median:	580.16In
ORC Mainsail area:	462.318Ft?
Surface area:	473.646Ft?
Clew height:	4.87In
Mast rake:	0.00In

Battens

Position	Length	Roach	Angle	Luff	Leech	Full
80.000%	59.26In	8.59In	71.789?	454.50In	477.58In	Full
60.000%	106.10In	12.11In	71.789?	340.84In	358.19In	Full
40.000%	145.20In	10.68In	71.789?	227.23In	238.79In	Full
20.000%	178.01In	6.16In	71.789?	113.65In	119.40In	Full

Reefing Points

- 1, Luff: 70.66In ; Leech: 73.84In ; Offset: 0.00In ; Number Eyelets: 2
- 2, Luff: 149.81In ; Leech: 156.36In ; Offset: 0.00In ; Number Eyelets: 2

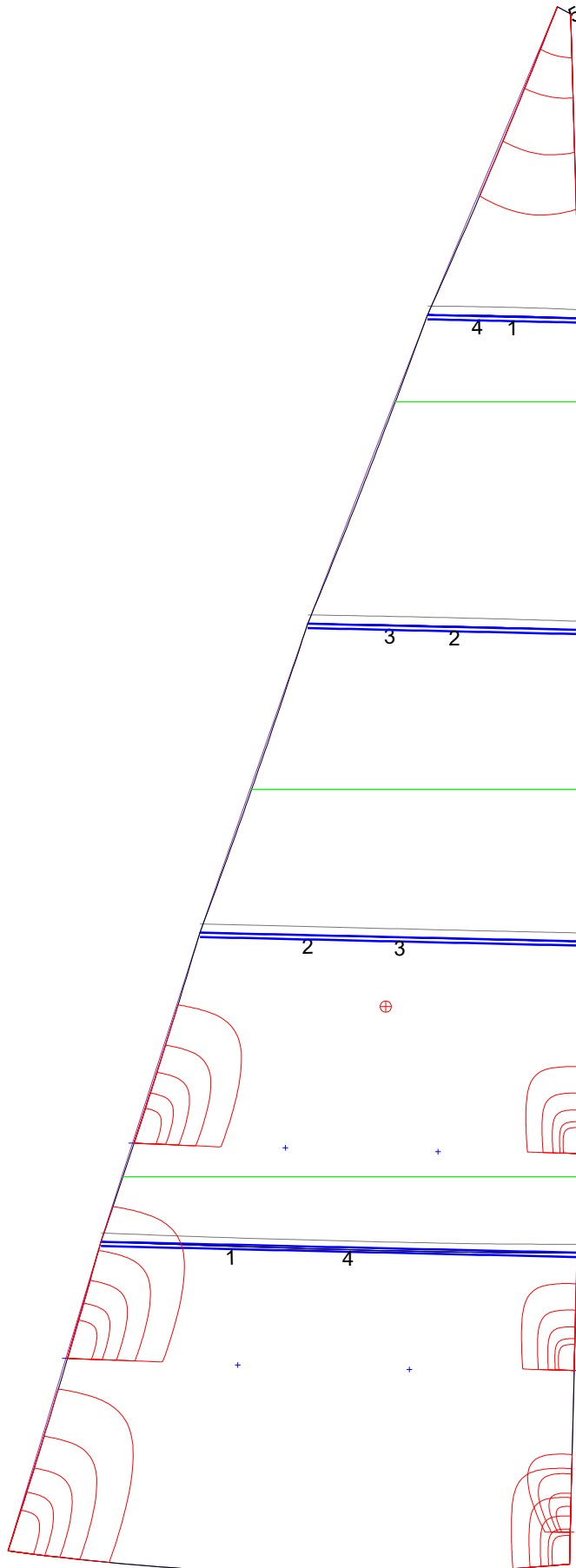
Draft Stripes

- 1, Luff: 141.33In ; Leech: 143.33In ;
- 2, Luff: 282.66In ; Leech: 292.30In ;
- 3, Luff: 424.02In ; Leech: 442.64In ;

Luff Curve

		Fanned Luff (@ 5.00% [10.24In])	Before BSeam
565.46In,	0.00In	100% (565.50In) :	0.00In
424.09In,	-3.85In	90% (508.98In) :	2.71In
282.73In,	-4.63In	80% (452.41In) :	5.24In
141.36In,	-3.16In	70% (395.87In) :	6.99In
0.00In,	0.00In	60% (339.31In) :	7.90In
		50% (282.76In) :	8.07In
		40% (226.20In) :	7.73In
		30% (169.65In) :	6.71In
		20% (113.09In) :	4.96In
		10% (56.56In) :	2.53In
		0% (0.00In) :	0.00In

Mainsail: 7000709 Justin Grand Soleil 40 4D Membrane MainV1.des



Seam Allowances			
Zone: 1	Split	Radial	Cross
	3.150In	3.150In	3.150In

Edge Excesses			
Sail:	Luff	Leech	Foot
	0.000In	0.000In	0.000In

Total Seam Lengths (In)

Horizontal	488.53
Radial/Vertical	0.00
Bi-Radial Split	0.00

Materials

Material	Area (Ft ²)	Panels
Material 1	475.04	1,2,3,4,5