

Mainsail: 7000626 Eduard-1 Farr30 MainsailV4.des

Design Info

=====

Initial Design Date: 14/7/2023

Boat:

Farr 30

Client:

Design File:

\\NAS\Engineering files\Queenie-Customer Order\Fareast Sails\2023 Order\Need Confrim Order\7000626 Eduard\7000626 Eduard-1 Farr30 MainsailV4.des

Comments:

Design Data

=====

Main

Measurements

Luff geodesic:	12.230m
Leech geodesic:	12.851m
Foot geodesic:	4.340m
Head geodesic:	0.170m
Upper width (MUW):	1.068m
Three-quarter width (MTW):	1.929m
Half width (MHW):	3.139m
Quarter width (MQW):	3.921m
Foot median:	12.543m
ORC Mainsail area:	34.407m ²
Surface area:	35.866m ²
Clew height:	0.307m
Mast rake:	0.000m

Battens

Position	Length	Roach	Angle	Luff	Leech	Full
80.835%	1.730m	0.552m	83.000?	9.666m	10.339m	Full
62.000%	1.570m	0.666m	83.000?	7.207m	7.930m	
42.000%	1.570m	0.590m	83.000?	4.613m	5.372m	
22.000%	1.570m	0.352m	83.000?	2.038m	2.814m	

Reefing Points

1, Luff: 1.773m ; Leech: 1.813m ; Offset: 0.000m ; Number Eyelets: 3

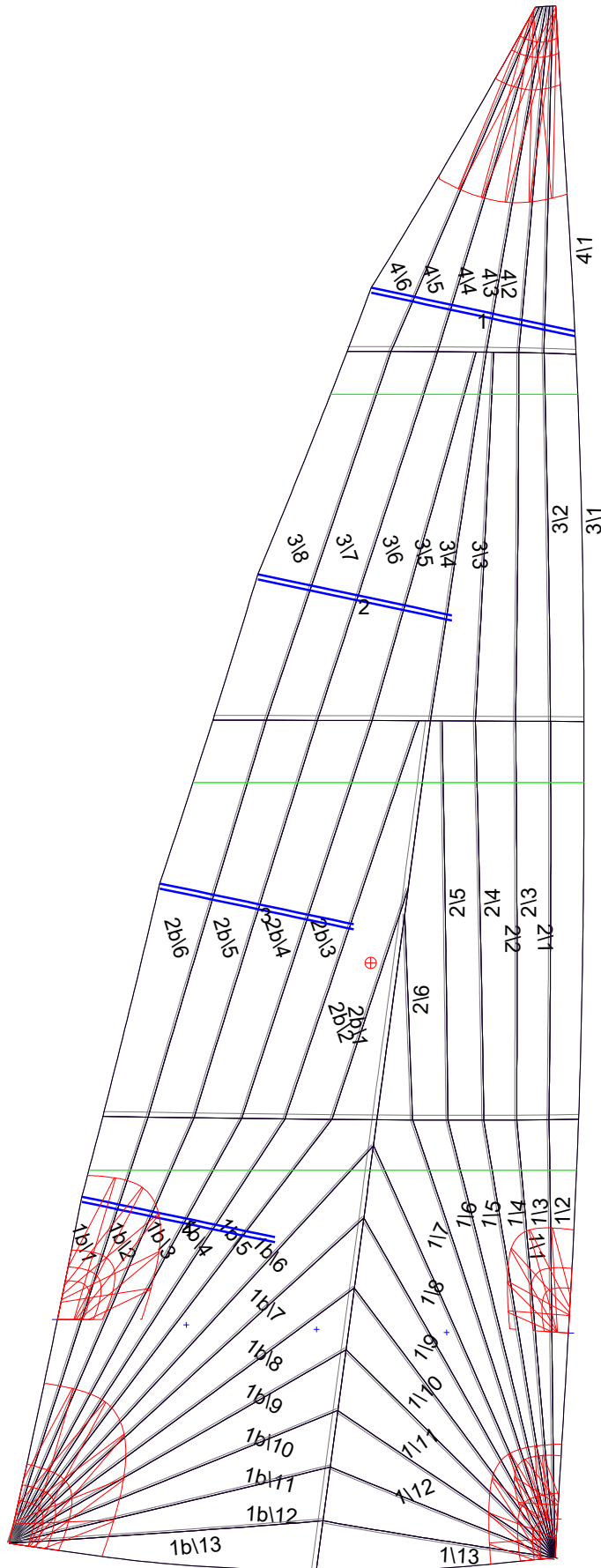
Draft Stripes

1, Luff: 3.057m ; Leech: 3.020m ;
 2, Luff: 6.111m ; Leech: 6.185m ;
 3, Luff: 9.166m ; Leech: 9.411m ;

Luff Curve

		Fanned Luff (@ 5.00% [0.215m])	Before BSeam
12.225m,	0.000m	100% (12.230m) :	0.000m
9.169m,	-0.175m	90% (11.008m) :	0.094m
6.113m,	-0.225m	80% (9.785m) :	0.184m
3.056m,	-0.168m	70% (8.562m) :	0.250m
0.000m,	0.000m	60% (7.339m) :	0.286m
		50% (6.115m) :	0.296m
		40% (4.891m) :	0.285m
		30% (3.668m) :	0.249m
		20% (2.445m) :	0.187m
		10% (1.223m) :	0.098m
		0% (0.000m) :	0.000m

Mainsail: 7000626 Eduard-1 Farr30 MainsailV4.des



Seam Allowances			
	Split	Radial	Cross
Zone: 1/a	0.038m	0.016m	0.038m
Zone: 1/b	0.038m	0.016m	0.038m
Zone: 2/a	0.038m	0.016m	0.038m
Zone: 2/b	0.038m	0.016m	0.038m
Zone: 3	0.038m	0.016m	0.038m
Zone: 4	0.038m	0.016m	0.038m

Edge Excesses			
	Luff	Leech	Foot
Sail:	0.000m	0.000m	0.000m

Total Seam Lengths (m)

Horizontal	8.84
Radial/Vertical	142.49
Bi-Radial Split	7.09

Materials

Material	Area (m ²)	Panels
Material 1	35.86	1\1, 1\2, 1\3, 1\4, 1\5 1\6, 1\7, 1\8, 1\9, 1\10 1\11, 1\12, 1\13, 1b\1, 1b\2 1b\3, 1b\4, 1b\5, 1b\6, 1b\7 1b\8, 1b\9, 1b\10, 1b\11, 1b\12 1b\13, 2\1, 2\2, 2\3, 2\4 2\5, 2\6, 2b\1, 2b\2, 2b\3 2b\4, 2b\5, 2b\6, 3\1, 3\2 3\3, 3\4, 3\5, 3\6, 3\7 3\8, 4\1, 4\2, 4\3, 4\4 4\5, 4\6