

Spinnaker: 7000622 Padraig Fastnet 34 Symmetrical spin.des

Design Info
 =====

Design File:
 \\NAS\Engineering files\Queenie-Customer Order\Fareast Sails\2023 Order\Need Confrim Order\7000622 Padraig\700

Initial Design Date: 1/7/2023
 Boat:

Comments:

Client:

Design Data
 =====

Spinnaker

Measurements

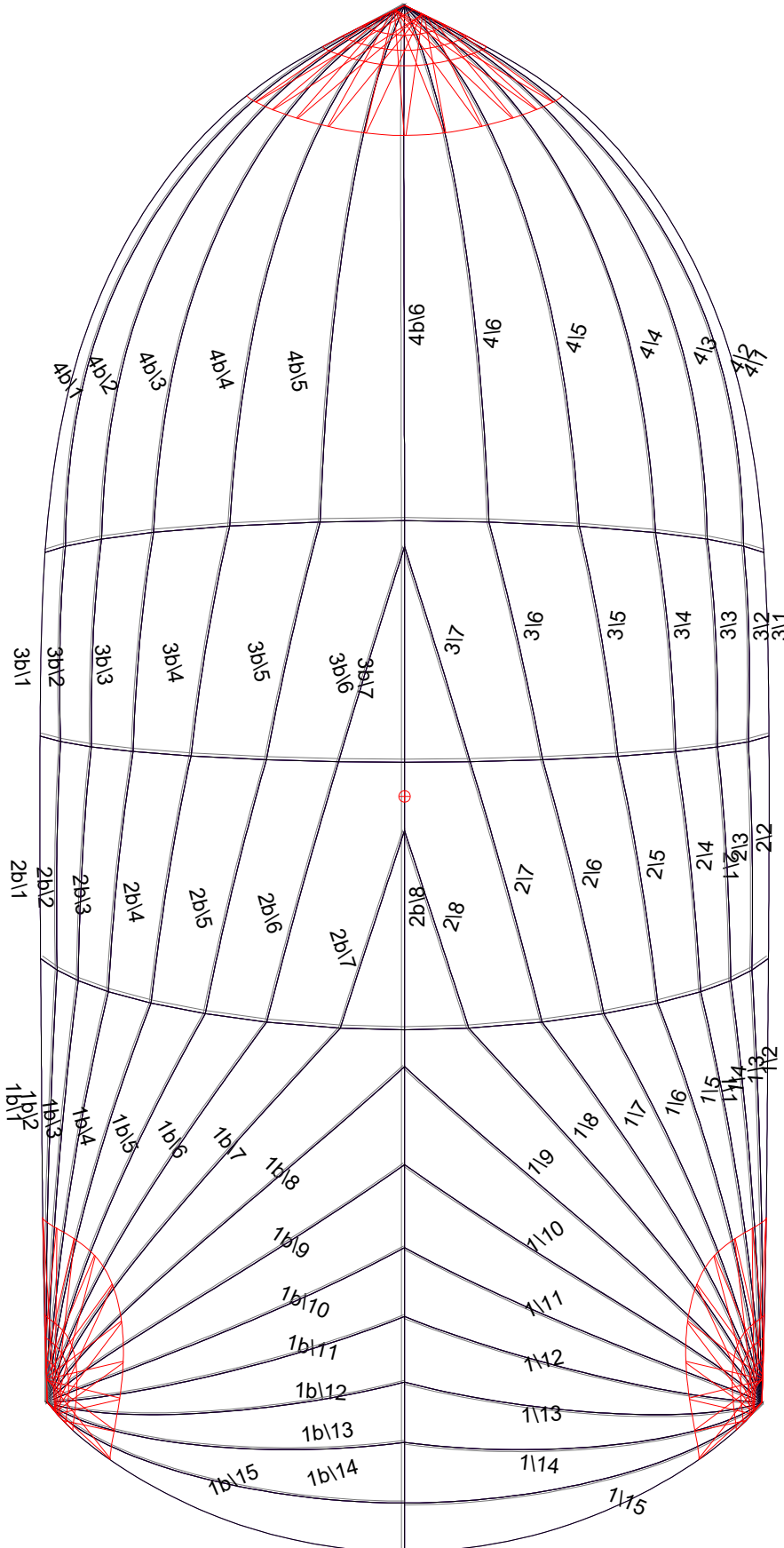
Leech length (SLE): 42.001Ft
 Foot length (SFL): 23.501Ft
 Headboard Width: 0.016Ft
 Maximum width (31.0%): 24.133Ft
 Three-quarter width: 16.385Ft
 Half width (SHW): 23.509Ft
 Quarter width: 24.108Ft
 Foot median: 46.389Ft
 ORC Spinnaker Area: 822.782Ft?
 IRC Spinnaker Area: 819.491Ft?
 Surface Area: 900.083Ft?
 Hoist height: 44.000Ft
 Pole Length: 13.680Ft

Luff Curve

50.853Ft, 0.000Ft
 38.140Ft, 0.000Ft
 25.427Ft, 0.000Ft
 12.713Ft, 0.000Ft
 0.000Ft, 0.000Ft

Fanned Luff (@ 5.00% [0.922Ft])		Before BSeam
100% (24.915Ft) :	0.000Ft	-0.000Ft
78% (19.408Ft) :	-6.167Ft	4.391Ft
46% (11.456Ft) :	-5.868Ft	6.432Ft
56% (13.968Ft) :	-2.327Ft	6.967Ft
71% (17.622Ft) :	-0.036Ft	6.652Ft
48% (12.022Ft) :	-1.417Ft	5.872Ft
55% (13.707Ft) :	2.212Ft	4.884Ft
41% (10.153Ft) :	3.740Ft	3.764Ft
27% (6.780Ft) :	2.741Ft	2.571Ft
14% (3.516Ft) :	1.373Ft	1.327Ft
0% (0.000Ft) :	0.000Ft	0.000Ft

Spinnaker: 7000622 Padraig Fastnet 34 Symmetrical spin.des



Seam Allowances

Zone:	Split	Radial	Cross
Zone: 1/a	0.082Ft	0.049Ft	0.082Ft
Zone: 1/b	0.082Ft	0.049Ft	0.082Ft
Zone: 2/a	0.082Ft	0.049Ft	0.082Ft
Zone: 2/b	0.082Ft	0.049Ft	0.082Ft
Zone: 3/a	0.082Ft	0.049Ft	0.082Ft
Zone: 3/b	0.082Ft	0.049Ft	0.082Ft
Zone: 4/a	0.082Ft	0.049Ft	0.082Ft
Zone: 4/b	0.082Ft	0.049Ft	0.082Ft

Edge Excesses

Sail:	Luff	Leech	Foot
Sail:	0.000Ft	0.000Ft	0.000Ft

Total Seam Lengths (Ft)

Horizontal	71.09
Radial/Vertical	733.36
Bi-Radial Split	47.35

Materials

Material	Area (Ft ²)	Panels
Material 1	898.71	1\1,1\2,1\3,1\4,1\5 1\6,1\7,1\8,1\9,1\10 1\11,1\12,1\13,1\14,1\15 1b\1,1b\2,1b\3,1b\4,1b\5 1b\6,1b\7,1b\8,1b\9,1b\10 1b\11,1b\12,1b\13,1b\14,1b\15 2\1,2\2,2\3,2\4,2\5 2\6,2\7,2\8,2b\8,2b\7 2b\6,2b\5,2b\4,2b\3,2b\2 2b\1,3\1,3\2,3\3,3\4 3\5,3\6,3\7,3b\7,3b\6 3b\5,3b\4,3b\3,3b\2,3b\1 4\1,4\2,4\3,4\4,4\5 4\6,4b\6,4b\5,4b\4,4b\3 4b\2,4b\1