

Genoa: 7000601 Matthieu Mirage33 HeadsailV4.des

Design Info
=====

Design File:
\\NAS\Engineering files\Queenie-Customer Order\Fareast Sails\2023 Order\Need Confrim Order\7000601 Matthieu\7000601

Initial Design Date: 15/6/2023
Boat:

Comments:

Client:

Design Data
=====

Genoa

Measurements

| | |
|----------------------------|----------|
| Luff geodesic: | 11.560m |
| Leech geodesic: | 11.224m |
| Foot geodesic: | 4.842m |
| Headboard width: | 0.030m |
| Luff perpendicular (HLP): | 4.668m |
| Upper width (HUW): | 0.522m |
| Three-quarter width (HTW): | 1.038m |
| Half width (HHW): | 2.162m |
| Quarter width (HQW): | 3.388m |
| Foot median: | 11.281m |
| ORC Headsail area: | 25.932m? |
| IRC Headsail area: | 25.867m? |
| Surface area: | 26.060m? |
| Forestay height: | 13.110m |
| J: | 3.890m |

Draft Stripes

1, Luff: 3.831m ; Leech: 3.722m ;
2, Luff: 7.657m ; Leech: 7.403m ;

Luff Curve

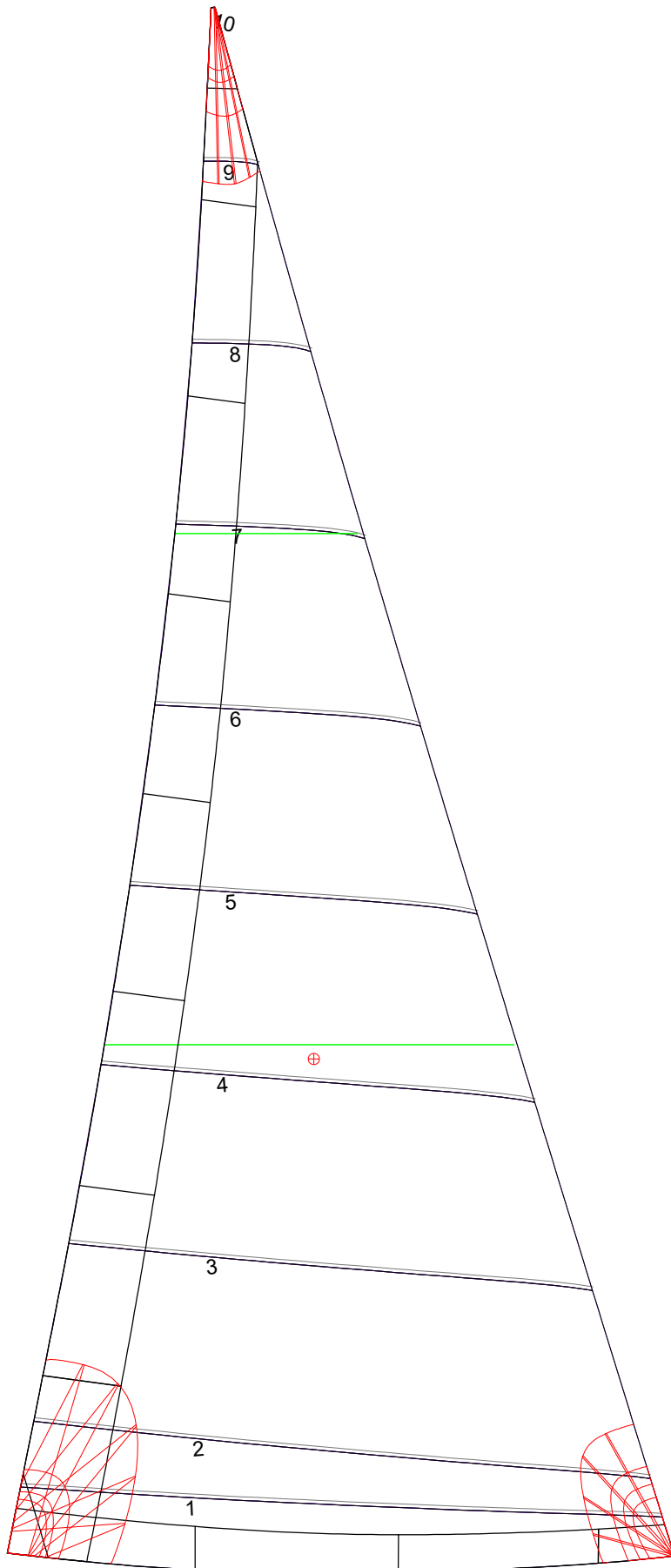
| | |
|----------|--------|
| 11.558m, | 0.000m |
| 10.597m, | 0.040m |
| 9.535m, | 0.071m |
| 8.600m, | 0.088m |
| 7.513m, | 0.094m |
| 5.752m, | 0.083m |
| 3.756m, | 0.056m |
| 1.954m, | 0.028m |
| 0.000m, | 0.000m |

Fanned Luff (@ 5.00% [0.239m])

| | | |
|------------------|---------|---------|
| 100% (11.558m) : | -0.000m | -0.000m |
| 90% (10.401m) : | -0.042m | -0.003m |
| 80% (9.248m) : | -0.074m | -0.000m |
| 70% (8.091m) : | -0.090m | 0.006m |
| 60% (6.935m) : | -0.092m | 0.014m |
| 50% (5.779m) : | -0.084m | 0.022m |
| 40% (4.624m) : | -0.071m | 0.028m |
| 30% (3.467m) : | -0.054m | 0.029m |
| 20% (2.312m) : | -0.036m | 0.025m |
| 10% (1.155m) : | -0.018m | 0.016m |
| 0% (0.000m) : | 0.000m | 0.000m |

Before BSeam

Genoa: 7000601 Matthieu Mirage33 HeadsailV4.des



Seam Allowances

| Zone: | Split | Radial | Cross |
|---------|--------|--------|--------|
| Zone: 1 | 0.026m | 0.026m | 0.026m |
| Cover 1 | 0.025m | 0.025m | 0.025m |
| Cover 2 | 0.025m | 0.025m | 0.025m |
| Cover 3 | 0.000m | 0.000m | 0.000m |
| Cover 4 | 0.000m | 0.000m | 0.000m |

Edge Excesses

| Sail: | Luff | Leech | Foot |
|---------|--------|--------|--------|
| Sail: | 0.000m | 0.000m | 0.000m |
| Cover 0 | 0.070m | 0.100m | 0.070m |
| Cover 1 | 0.070m | 0.070m | 0.100m |
| Cover 2 | 0.000m | 0.070m | 0.070m |
| Cover 3 | 0.000m | 0.070m | 0.070m |

Total Seam Lengths (m)

| | |
|-----------------|-------|
| Horizontal | 23.87 |
| Radial/Vertical | 0.00 |
| Bi-Radial Split | 0.00 |

Materials

| Material | Area (m ²) | Panels |
|------------|------------------------|-------------------------|
| Material 1 | 26.11 | 1,2,3,4,5 6,7,8,9,10 |