

Mainsail: 7000520 Andrea-1 MainsailV1.des

Design Info
=====

Design File:
\\NAS\Engineering files\Queenie-Customer Order\Fareast Sails\2023 Order\Need Confrim Order\7000520 Andrea\7000

Initial Design Date: 27/7/2023
Boat:

Comments:

Client:

Design Data
=====

Main

Measurements

Luff geodesic:	10.692m
Leech geodesic:	11.093m
Foot geodesic:	3.276m
Head geodesic:	0.115m
Upper width (MUW):	0.679m
Three-quarter width (MTW):	1.215m
Half width (MHW):	2.084m
Quarter width (MQW):	2.742m
Foot median:	10.894m
ORC Mainsail area:	20.697m?
Surface area:	21.171m?
Clew height:	0.100m
Mast rake:	0.000m

Battens

Position	Length	Roach	Angle	Luff	Leech	Full
82.000%	0.978m	0.225m	74.910?	8.763m	9.071m	Full
62.000%	1.739m	0.292m	74.910?	6.626m	6.858m	Full
42.000%	2.342m	0.258m	74.910?	4.489m	4.646m	Full
21.000%	2.845m	0.149m	74.910?	2.246m	2.323m	Full

Reefing Points

- 1, Luff: 1.800m ; Leech: 1.845m ; Offset: 0.000m ; Number Eyelets: 3
- 2, Luff: 3.000m ; Leech: 3.075m ; Offset: 0.000m ; Number Eyelets: 2

Draft Stripes

- 1, Luff: 3.527m ; Leech: 3.550m ;
- 2, Luff: 7.055m ; Leech: 7.211m ;

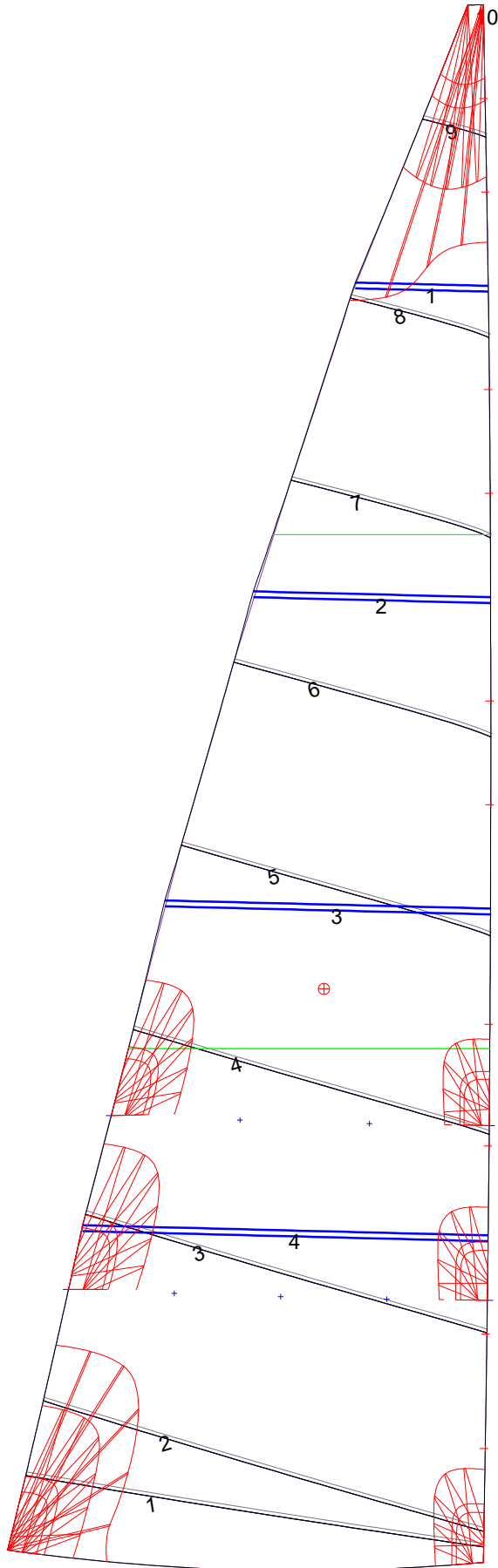
Luff Slides

- 1, Position: 0.784m
- 2, Position: 1.568m
- 3, Position: 2.860m
- 4, Position: 3.694m
- 5, Position: 5.201m
- 6, Position: 5.913m
- 7, Position: 7.338m
- 8, Position: 8.051m
- 9, Position: 9.406m
- 10, Position: 10.049m

Luff Curve

		Fanned Luff (@ 5.00% [0.163m])	Before BSeam
10.692m,	0.000m	100% (10.692m) :	0.000m
9.359m,	-0.025m	90% (9.623m) :	0.038m
8.019m,	-0.042m	80% (8.554m) :	0.075m
6.675m,	-0.050m	70% (7.485m) :	0.103m
5.346m,	-0.051m	60% (6.415m) :	0.117m
3.984m,	-0.047m	50% (5.346m) :	0.118m
2.673m,	-0.038m	40% (4.277m) :	0.107m
1.332m,	-0.021m	30% (3.208m) :	0.088m
0.000m,	0.000m	20% (2.138m) :	0.061m
		10% (1.069m) :	0.030m
		0% (0.000m) :	0.000m

Mainsail: 7000520 Andrea-1 MainsailV1.des



Seam Allowances			
Zone: 1	Split	Radial	Cross
	0.025m	0.025m	0.025m

Edge Excesses			
Sail:	Luff	Leech	Foot
	0.000m	0.000m	0.000m

Total Seam Lengths (m)

Horizontal	19.23
Radial/Vertical	0.00
Bi-Radial Split	0.00

Materials

Material	Area (m ²)	Panels
Material 1	21.18	1,2,3,4,5 6,7,8,9,10