

Mainsail: 7000220 Negley mainV2.des

Design Info
=====

Design File:
\\Nas\工程部-专用文件\Queenie-跟进客户\Fareast Sails\2023 Order\Need Confrim Order\7000220 Negley\7000220 Ne

Initial Design Date: 28/2/2023
Boat:

Comments:

Client:

Design Data
=====

Main

Measurements

Luff geodesic: 14.008m
Leech geodesic: 14.746m
Foot geodesic: 4.989m
Head geodesic: 0.115m
Upper width (MUW): 0.878m
Three-quarter width (MTW): 1.637m
Half width (MHW): 2.977m
Quarter width (MQW): 4.062m
Foot median: 14.351m
ORC Mainsail area: 39.321m?
Surface area: 40.205m?
Clew height: 0.100m
Mast rake: 0.000m

Battens

Position	Length	Roach	Angle	Luff	Leech	Full
80.000%	1.388m	0.202m	72.148?	11.203m	11.761m	Full
60.000%	2.521m	0.279m	72.148?	8.403m	8.820m	Full
40.000%	3.473m	0.252m	72.148?	5.603m	5.880m	Full
20.000%	4.269m	0.144m	72.148?	2.804m	2.940m	Full

Reefing Points

1, Luff: 2.101m ; Leech: 2.189m ; Offset: 0.000m ; Number Eyelets: 3
2, Luff: 4.201m ; Leech: 4.377m ; Offset: 0.000m ; Number Eyelets: 3

Draft Stripes

1, Luff: 3.501m ; Leech: 3.537m ;
2, Luff: 7.002m ; Leech: 7.223m ;
3, Luff: 10.504m ; Leech: 10.941m ;

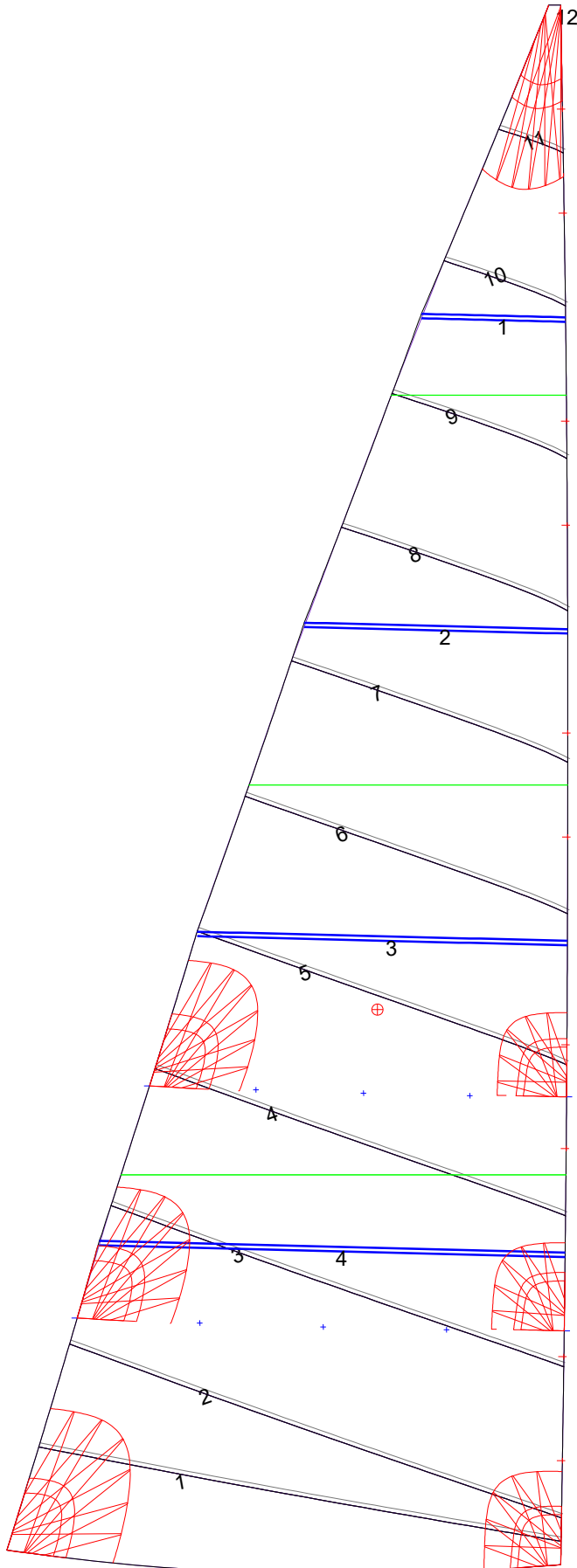
Luff Slides

1, Position: 0.935m
2, Position: 1.869m
3, Position: 3.737m
4, Position: 4.670m
5, Position: 6.536m
6, Position: 7.469m
7, Position: 9.336m
8, Position: 10.269m
9, Position: 12.138m
10, Position: 13.073m

Luff Curve

		Fanned Luff (@ 5.00% [0.248m])	Before BSeam
14.008m,	0.000m	100% (14.008m) :	0.000m
12.262m,	-0.029m	90% (12.607m) :	0.050m
10.506m,	-0.051m	80% (11.206m) :	0.097m
8.745m,	-0.061m	70% (9.806m) :	0.135m
7.004m,	-0.063m	60% (8.405m) :	0.157m
5.219m,	-0.059m	50% (7.004m) :	0.161m
3.502m,	-0.047m	40% (5.603m) :	0.147m
1.746m,	-0.027m	30% (4.202m) :	0.121m
0.000m,	0.000m	20% (2.801m) :	0.083m
		10% (1.401m) :	0.040m
		0% (0.000m) :	0.000m

Mainsail: 7000220 Negley mainV2.des



Seam Allowances			
Zone: 1	Split	Radial	Cross
	0.000m	0.000m	0.038m

Edge Excesses			
Sail:	Luff	Leech	Foot
	0.000m	0.000m	0.000m

Total Seam Lengths (m)

Horizontal	33.56
Radial/Vertical	0.00
Bi-Radial Split	0.00

Materials

Material	Area (m ²)	Panels
Material 1	40.26	1,2,3,4,5 6,7,8,9,10 11,12