

Genoa: 7000217 Lee-2 furling jib V1 .des

Design Info

=====

Design File:

\\Nas\工程部-专用文件\Queenie-跟进客户\Fareast Sails\2023 Order\Need Confrim Order\7000217 Lee\7000217 Lee-2

Initial Design Date: 22/2/2023

Boat:

Client:

Comments:

luff=9.1m, leech=7.72m, foot=5.8m
LP=4.91m, not 4.44m

Design Data

=====

Genoa

Measurements

Luff geodesic:	10.010m
Leech geodesic:	6.260m
Foot geodesic:	5.540m
Headboard width:	0.050m
Luff perpendicular (HLP):	3.152m
Upper width (HUW):	0.383m
Three-quarter width (HTW):	0.732m
Half width (HHW):	1.481m
Quarter width (HQW):	2.292m
Foot median:	7.919m
ORC Headsail area:	15.324m?
IRC Headsail area:	15.301m?
Surface area:	15.545m?
Forestay height:	12.000m
J:	3.000m

Luff Slides

- 1, Position: 0.350m
- 2, Position: 1.022m
- 3, Position: 1.694m
- 4, Position: 2.366m
- 5, Position: 3.039m
- 6, Position: 3.711m
- 7, Position: 4.383m
- 8, Position: 5.055m
- 9, Position: 5.727m
- 10, Position: 6.399m
- 11, Position: 7.071m
- 12, Position: 7.744m
- 13, Position: 8.416m
- 14, Position: 9.088m
- 15, Position: 9.760m

Luff Curve

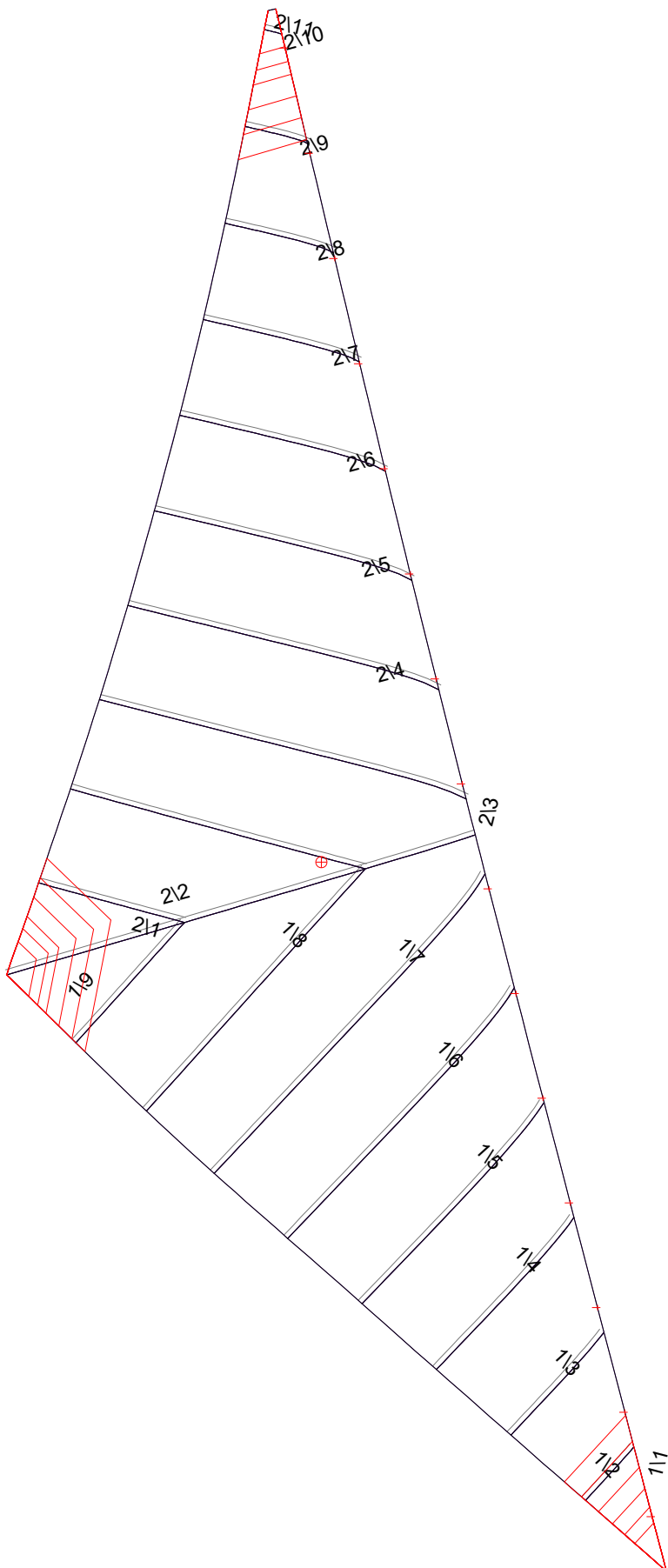
10.009m,	0.000m
7.507m,	0.042m
5.004m,	0.057m
2.502m,	0.030m
0.000m,	0.000m

Fanned Luff (@ 5.00% [0.205m])

100% (10.009m) :	-0.000m	-0.000m
90% (9.008m) :	-0.024m	0.000m
80% (8.007m) :	-0.047m	0.001m
70% (7.006m) :	-0.066m	0.004m
60% (6.005m) :	-0.077m	0.009m
50% (5.004m) :	-0.078m	0.016m
40% (4.003m) :	-0.069m	0.024m
30% (3.003m) :	-0.053m	0.026m
20% (2.002m) :	-0.036m	0.018m
10% (1.000m) :	-0.019m	0.005m
0% (0.000m) :	0.000m	0.000m

Before BSeam

Genoa: 7000217 Lee-2 furling jib V1 .des



Seam Allowances

	Split	Radial	Cross
Zone: 1	0.032m	0.032m	0.032m
Zone: 2	0.032m	0.032m	0.032m

Edge Excesses

Sail:	Luff	Leech	Foot
	0.000m	0.000m	0.000m

Total Seam Lengths (m)

Horizontal	16.01
Radial/Vertical	12.34
Bi-Radial Split	0.00

Materials

Material	Area (m ²)	Panels
Material 1	15.54	1/1, 1/2, 1/3, 1/4, 1/5 1/6, 1/7, 1/8, 1/9, 2/1 2/2, 2/3, 2/4, 2/5, 2/6 2/7, 2/8, 2/9, 2/10, 2/11