

Mainsail: 6001220 Paul-1 Jeanneau 45 Main V1.des

Design Info
=====

Design File:
F:\Dropbox\Dropbox-20221019\Dropbox20221213\Dropbox\Fareast Sails\2023 Order\Need Confrim Order\6001220 Pa

Initial Design Date: 31/12/2022
Boat:

Comments:

Client:

Design Data
=====

Main

Measurements

Luff geodesic: 15.800m
Leech geodesic: 16.400m
Foot geodesic: 5.260m
Head geodesic: 0.133m
Upper width (MUW): 1.009m
Three-quarter width (MTW): 1.848m
Half width (MHW): 3.246m
Quarter width (MQW): 4.364m
Foot median: 16.078m
ORC Mainsail area: 48.045m?
Surface area: 49.092m?
Clew height: 0.256m
Mast rake: 0.000m

Battens

Position	Length	Roach	Angle	Luff	Leech	Full
81.293%	1.519m	0.325m	74.615?	12.834m	13.298m	Full
61.705%	2.697m	0.408m	74.615?	9.740m	10.094m	Full
41.656%	3.686m	0.360m	74.615?	6.574m	6.814m	Full
21.206%	4.533m	0.226m	74.615?	3.346m	3.469m	Full

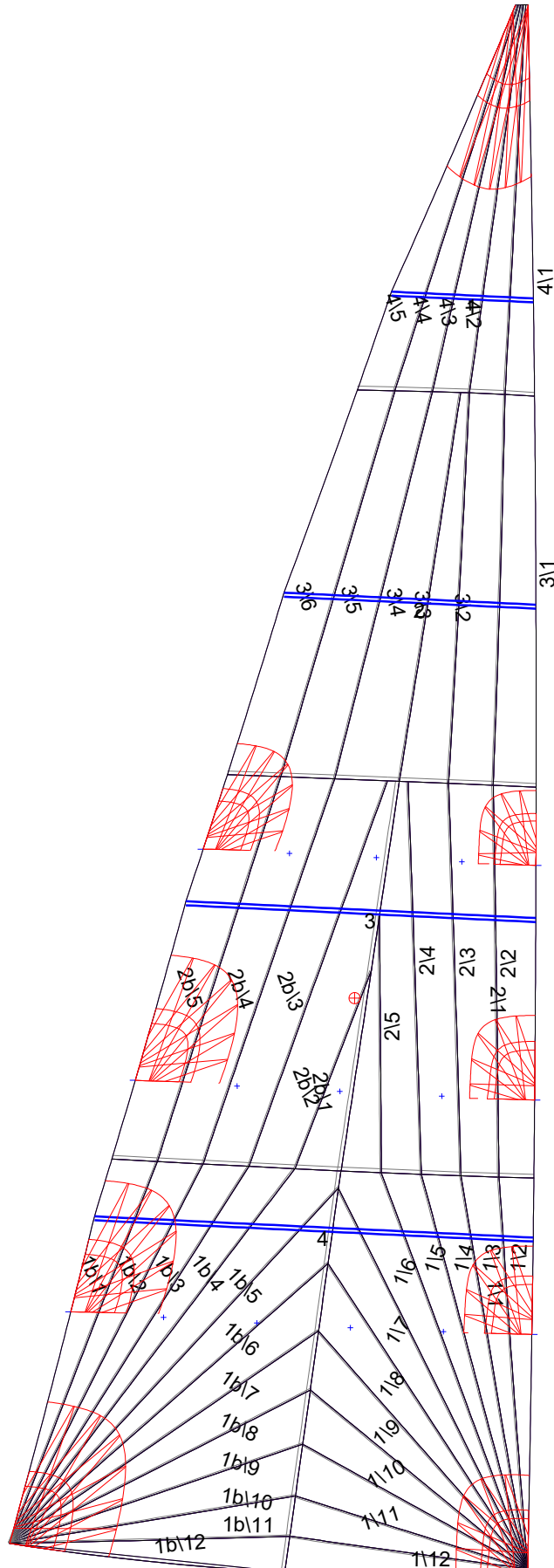
Reefing Points

1, Luff: 2.368m ; Leech: 2.429m ; Offset: 0.000m ; Number Eyelets: 4
2, Luff: 4.737m ; Leech: 4.861m ; Offset: 0.000m ; Number Eyelets: 3
3, Luff: 7.106m ; Leech: 7.296m ; Offset: 0.000m ; Number Eyelets: 3

Luff Curve

		Fanned Luff (@ 5.00% [0.262m])	Before BSeam
15.799m,	0.000m	100% (15.800m) :	0.000m
13.831m,	-0.039m	90% (14.221m) :	0.055m
11.850m,	-0.066m	80% (12.640m) :	0.107m
9.864m,	-0.080m	70% (11.060m) :	0.150m
7.900m,	-0.083m	60% (9.480m) :	0.175m
5.887m,	-0.077m	50% (7.900m) :	0.179m
3.950m,	-0.061m	40% (6.320m) :	0.166m
1.969m,	-0.035m	30% (4.740m) :	0.139m
0.000m,	0.000m	20% (3.160m) :	0.099m
		10% (1.580m) :	0.047m
		0% (0.000m) :	0.000m

Mainsail: 6001220 Paul-1 Jeanneau 45 Main V1.des



Seam Allowances

Zone:	Split	Radial	Cross
Zone: 1/a	0.038m	0.015m	0.038m
Zone: 1/b	0.038m	0.015m	0.038m
Zone: 2/a	0.038m	0.015m	0.038m
Zone: 2/b	0.038m	0.015m	0.038m
Zone: 3	0.038m	0.015m	0.038m
Zone: 4	0.038m	0.015m	0.038m

Edge Excesses

Sail:	Luff	Leech	Foot
Sail:	0.000m	0.000m	0.000m

Total Seam Lengths (m)

Horizontal	9.55
Radial/Vertical	147.12
Bi-Radial Split	8.39

Materials

Material	Area (m ²)	Panels
Material 1	51.23	1\1, 1\2, 1\3, 1\4, 1\5 1\6, 1\7, 1\8, 1\9, 1\10 1\11, 1\12, 1b\1, 1b\2, 1b\3 1b\4, 1b\5, 1b\6, 1b\7, 1b\8 1b\9, 1b\10, 1b\11, 1b\12, 2\1 2\2, 2\3, 2\4, 2\5, 2b\1 2b\2, 2b\3, 2b\4, 2b\5, 3\1 3\2, 3\3, 3\4, 3\5, 3\6 4\1, 4\2, 4\3, 4\4, 4\5