

Mainsail: 6001220 Paul Main-1 Jeanneau 45.des

Design Info
=====

Design File:
F:\Dropbox\Dropbox\Fareast Sails\2022 Order\Need confirm order\6001220 Paul\6001220 Paul Main-1 Jeanneau 45.d

Initial Design Date: 31/12/2022
Boat:

Comments:

Client:

Design Data
=====

Main

Measurements

Luff geodesic: 15.200m
 Leech geodesic: 15.934m
 Foot geodesic: 5.270m
 Head geodesic: 0.133m
 Upper width (MUW): 0.998m
 Three-quarter width (MTW): 1.841m
 Half width (MHW): 3.253m
 Quarter width (MQW): 4.363m
 Foot median: 15.538m
 ORC Mainsail area: 46.221m?
 Surface area: 47.404m?
 Clew height: 0.138m
 Mast rake: 0.000m

Battens

Position	Length	Roach	Angle	Luff	Leech	Full
80.000%	1.592m	0.313m	72.672?	12.155m	12.726m	Full
60.000%	2.800m	0.423m	72.672?	9.116m	9.545m	Full
40.000%	3.781m	0.374m	72.672?	6.077m	6.363m	Full
20.000%	4.576m	0.212m	72.672?	3.040m	3.182m	Full

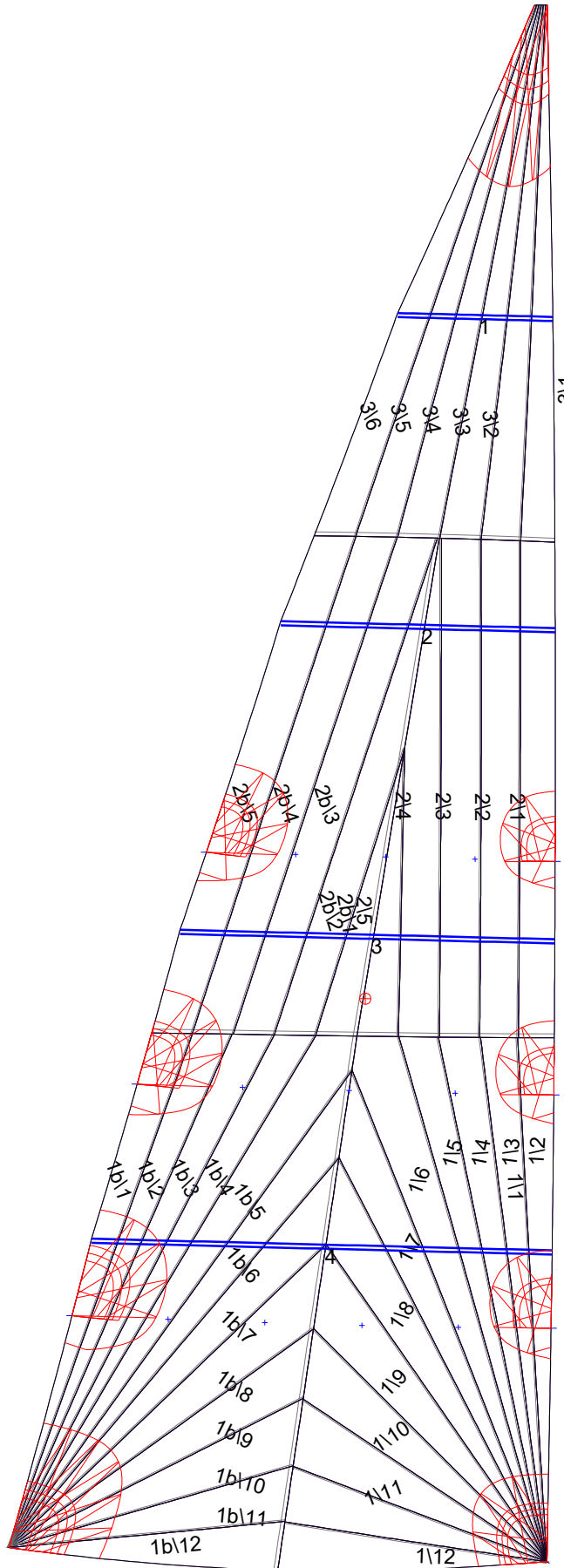
Reefing Points

1, Luff: 2.279m ; Leech: 2.351m ; Offset: 0.000m ; Number Eyelets: 4
 2, Luff: 4.559m ; Leech: 4.704m ; Offset: 0.000m ; Number Eyelets: 3
 3, Luff: 6.838m ; Leech: 7.065m ; Offset: 0.000m ; Number Eyelets: 3

Luff Curve

		Fanned Luff (@ 5.00% [0.263m])	Before BSeam
15.200m,	0.000m	100% (15.200m) :	0.000m
13.305m,	-0.037m	90% (13.680m) :	0.056m
11.400m,	-0.064m	80% (12.160m) :	0.107m
9.489m,	-0.077m	70% (10.640m) :	0.141m
7.600m,	-0.080m	60% (9.120m) :	0.160m
5.663m,	-0.074m	50% (7.600m) :	0.164m
3.800m,	-0.059m	40% (6.080m) :	0.154m
1.894m,	-0.034m	30% (4.560m) :	0.131m
0.000m,	0.000m	20% (3.040m) :	0.094m
		10% (1.520m) :	0.048m
		0% (0.000m) :	0.000m

Mainsail: 6001220 Paul Main-1 Jeanneau 45.des



Seam Allowances

Zone:	Split	Radial	Cross
Zone: 1/a	0.038m	0.015m	0.038m
Zone: 1/b	0.038m	0.015m	0.038m
Zone: 2/a	0.038m	0.015m	0.038m
Zone: 2/b	0.038m	0.015m	0.038m
Zone: 3	0.038m	0.015m	0.038m

Edge Excesses

Sail:	Luff	Leech	Foot
Sail:	0.000m	0.000m	0.000m

Total Seam Lengths (m)

Horizontal	6.50
Radial/Vertical	158.61
Bi-Radial Split	10.54

Materials

Material	Area (m ²)	Panels
Material 1	47.45	1\1,1\2,1\3,1\4,1\5 1\6,1\7,1\8,1\9,1\10 1\11,1\12,1b\1,1b\2,1b\3 1b\4,1b\5,1b\6,1b\7,1b\8 1b\9,1b\10,1b\11,1b\12,2\1 2\2,2\3,2\4,2\5,2b\1 2b\2,2b\3,2b\4,2b\5,3\1 3\2,3\3,3\4,3\5,3\6