

Genoa: 5001010 Tomas-v3

Design Info
=====

Design File:
E:\dropbox\Dropbox\Fareast Sails\2021\5001010 Tomas\5001010 Tomas-v3.des

Initial Design Date: 21/10/2021
Boat:

Comments:

Client:

Design Data
=====

Genoa

Measurements

Luff geodesic: 8.240m
 Leech geodesic: 7.211m
 Foot geodesic: 3.600m
 Headboard width: 0.035m
 Luff perpendicular (HLP): 3.157m
 Upper width (HUW): 0.382m
 Three-quarter width (HTW): 0.745m
 Half width (HHW): 1.524m
 Quarter width (HQW): 2.335m
 Foot median: 7.646m
 ORC Headsail area: 12.774m?
 IRC Headsail area: 12.757m?
 Surface area: 12.968m?
 Forestay height: 8.230m
 J: 2.720m

Luff Curve

		Fanned Luff (@ 5.00% [0.175m])	Before BSeam
8.239m,	0.000m	100% (8.239m) :	0.000m
6.179m,	0.035m	90% (7.415m) :	0.004m
4.120m,	0.047m	80% (6.592m) :	0.009m
2.060m,	0.035m	70% (5.768m) :	0.015m
0.000m,	0.000m	60% (4.944m) :	0.020m
		50% (4.120m) :	0.021m
		40% (3.296m) :	0.019m
		30% (2.472m) :	0.015m
		20% (1.648m) :	0.011m
		10% (0.823m) :	0.004m
		0% (0.000m) :	0.000m

Section Data

Position	Camber	Draft	Twist	Entry	Exit	Roach	Fwd Camb	Aft Camb
100.00%	6.178%	41.484%	19.969?	26.952?	-11.648?	0.000m	5.143%	4.714%
80.00%	10.747%	42.559%	15.975?	54.529?	-22.483?	-0.063m	8.821%	8.133%
60.00%	11.500%	42.431%	11.982?	60.132?	-24.691?	-0.092m	9.206%	8.678%
39.99%	10.122%	41.720%	7.987?	58.054?	-22.096?	-0.084m	8.152%	7.660%
20.00%	8.064%	40.663%	3.994?	49.160?	-17.753?	-0.051m	6.604%	6.145%
10.00%	6.608%	40.221%	1.997?	41.215?	-14.909?	-0.028m	5.479%	5.068%
0.00%	4.932%	39.779%	0.000?	31.098?	-11.603?	0.000m	4.160%	3.850%

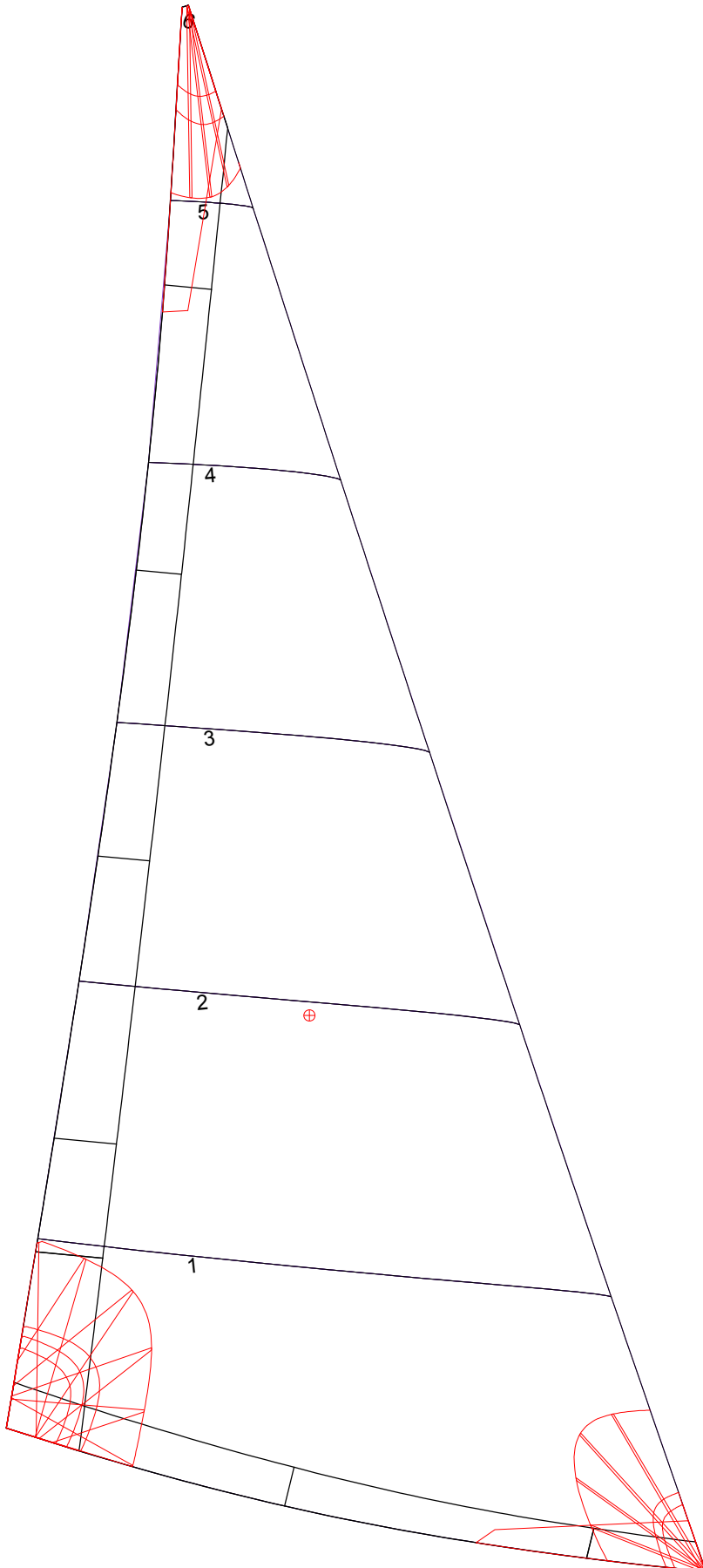
Chord Data

Luff LL : 8.2392m
 Leech : 7.1671m
 Luff Perpendicular : 2.9358m
 Clew Height : 0.7139m
 Headboard width : 0.0350m

Fanned Foot Curve Depths

25.0% 50.0% 75.0%
 0.0669m 0.0910m 0.0652m

Genoa: 5001010 Tomas-v3



Seam Allowances

	Split	Radial	Cross
Zone: 1	0.000m	0.000m	0.015m
Cover 1	0.025m	0.025m	0.025m
Cover 2	0.025m	0.025m	0.025m

Edge Excesses

	Luff	Leech	Foot
Sail:	0.000m	0.000m	0.000m
Cover 0	0.050m	0.050m	0.050m
Cover 1	0.050m	0.050m	0.050m

Total Seam Lengths (m)

Horizontal	8.39
Radial/Vertical	0.00
Bi-Radial Split	0.00

Materials

Material	Area (m ²)	Panels
Sailbody	13.01	1,2,3,4,5 6